

# 715

| MODELLI<br>MODELS | MOMENTO<br>LIFTING MOMENT | SBRACCIO ORIZ.<br>HORIZ. HYDRAULIC OUTREACH | PORTATA AL<br>DISTRIBUTORE<br>OIL FLOW TO THE CONTROL<br>VALVE | SBRACCIO MAX. VERTICALE<br>MAX VERTICAL REACH | PESO<br>WEIGHT | PRESSIONE<br>PRESSURE | INTERASSE<br>STABILIZZATORI<br>STANDARD APERTI<br>DISTANCE BETWEEN<br>CENTRES WITH OPENED<br>OUTRIGGERS |
|-------------------|---------------------------|---|--|---|----------------|-----------------------|---|
|                   | Tm.                       | m.  | l.min  | m.  | Kg             | bar                   | mm.   |
| 715 A1            | 14.12                     | 6.20  | 40   | 9.77  | 1940           | 290                   | 5000  |
| 715 A2            | 13.63                     | 8.25  | 40   | 11.79   | 2084           | 290                   | 5000  |
| 715 A3            | 13.14                     | 10.29                                       | 40   | 13.81   | 2223           | 290                   | 5000  |
| 715 A4            | 12.71                     | 12.38                                       | 40   | 15.88   | 2345           | 290                   | 5000  |
| 715 A5            | 12.3                      | 14.52                                       | 40   | 17.99   | 2457           | 290                   | 5000  |
| 715 A6            | 12.0                      | 16.60                                       | 40   | 20.05   | 2548           | 290                   | 5000  |
| 715 A3J3          | -                         | 17.46                                       | 40   | 21.22   | 2643           | 290                   | 5000  |

Autocarro consigliato - Recommended truck - Camion conseillé - Camion aconsejado  
M.T.T. ton 13 - G.V.W. ton 13

**STANDARD**



400°  
Angolo di rotazione  
Slewing angle



1100  
Serbatoio olio  
Oil Tank

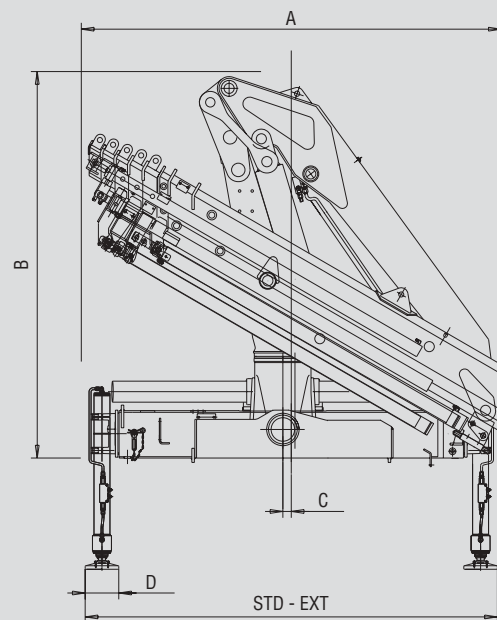
**STANDARD CE**



Limitatore di momento  
Overload device

|                 |      |      |      |      |       |       |       |                               |
|-----------------|------|------|------|------|-------|-------|-------|-------------------------------|
| <b>715 A1</b>   |      |      |      |      |       |       |       |                               |
| m               | 2.76 | 4.32 | 6.20 | 8.15 | 10.29 | 12.38 | 14.52 |                               |
| Kg              | 4900 | 3265 | 2285 | 1670 | 1215  | 900   | 675   |                               |
| <b>715 A2</b>   |      |      |      |      |       |       |       |                               |
| m               | 2.76 | 4.42 | 6.30 | 8.25 | 10.29 | 12.38 | 14.52 |                               |
| Kg              | 4700 | 3080 | 2120 | 1610 | 1215  | 900   | 675   |                               |
| <b>715 A3</b>   |      |      |      |      |       |       |       |                               |
| m               | 2.76 | 4.51 | 6.39 | 8.34 | 10.29 | 12.38 | 14.52 | 16.60                         |
| Kg              | 4550 | 2910 | 1970 | 1465 | 1175  | 900   | 675   | 515                           |
| <b>715 A4</b>   |      |      |      |      |       |       |       |                               |
| m               | 2.75 | 4.60 | 6.48 | 8.43 | 10.38 | 12.38 | 14.52 | 16.60 18.63                   |
| Kg              | 4400 | 2760 | 1840 | 1340 | 1050  | 870   | 675   | 515 380                       |
| <b>715 A5</b>   |      |      |      |      |       |       |       |                               |
| m               | 2.75 | 4.69 | 6.57 | 8.52 | 10.47 | 12.47 | 14.52 | 16.60 18.63 20.71             |
| Kg              | 4250 | 2620 | 1715 | 1220 | 935   | 755   | 640   | 515 380 230                   |
| <b>715 A6</b>   |      |      |      |      |       |       |       |                               |
| m               | 2.76 | 4.75 | 6.65 | 8.60 | 10.55 | 12.55 | 14.60 | 16.60 18.63 20.71             |
| Kg              | 4150 | 2510 | 1620 | 1150 | 840   | 660   | 545   | 470 380 230                   |
| <b>715 A3J3</b> |      |      |      |      |       |       |       |                               |
| m               |      |      |      |      |       |       |       | 13.06 14.64 16.18 17.76 19.44 |
| Kg              |      |      |      |      |       |       |       | 525 445 390 350 290           |
| <b>SC715 A2</b> |      |      |      |      |       |       |       |                               |
| m               | 2.65 | 3.48 | 6.37 | 8.41 | 10.50 | 12.64 |       |                               |
| Kg              | 5100 | 4010 | 2200 | 1600 | 1180  | 830   |       |                               |
| <b>SC715 A3</b> |      |      |      |      |       |       |       |                               |
| m               | 2.65 | 3.57 | 6.46 | 8.41 | 10.50 | 12.64 | 14.73 |                               |
| Kg              | 5000 | 3810 | 2050 | 1565 | 1180  | 830   | 560   |                               |
| <b>SC715 A4</b> |      |      |      |      |       |       |       |                               |
| m               | 2.65 | 3.66 | 6.55 | 8.50 | 10.50 | 12.64 | 14.73 | 16.75                         |
| Kg              | 4850 | 3635 | 1915 | 1435 | 1150  | 830   | 580   | 425                           |
| <b>SC715 A5</b> |      |      |      |      |       |       |       |                               |
| m               | 2.65 | 3.75 | 6.64 | 8.59 | 10.55 | 12.64 | 14.73 | 16.75 18.83                   |
| Kg              | 4500 | 3310 | 1700 | 1240 | 975   | 805   | 580   | 425 250                       |
| <b>SC715 A6</b> |      |      |      |      |       |       |       |                               |
| m               | 2.65 | 3.84 | 6.73 | 8.68 | 10.66 | 12.73 | 14.73 | 16.75 18.83                   |
| Kg              | 4200 | 2970 | 1500 | 1055 | 805   | 650   | 555   | 425 250                       |

Dati, descrizioni e illustrazioni sono indicativi e non impegnano F.lli Ferrari. Gru prodotte e/o commercializzate da F.lli Ferrari - Data, descriptions and illustrations are merely indicative and not binding. Cranes manufactured and marketed by F.lli Ferrari - Les données, descriptions et illustrations sont uniquement indicatives et n'engagent pas F.lli Ferrari. Grues produites et/ou vendues par F.lli Ferrari - Angaben, Beschreibungen und Abbildungen sind weisend und verpflichten nicht F.lli Ferrari. Die Kräne werden von F.lli Ferrari hergestellt und/oder vermarktet. - Los datos, las descripciones y las ilustraciones son indicativos y no implican compromiso para F.lli Ferrari. Gruas producidas y/o comercializadas por F.lli Ferrari - Os dados as descrições e ilustrações são indicativos e não comprometem F.lli Ferrari. Guindaste produzidos e/ou comercializados pela F.lli Ferrari.



| 715      | A    | B    | C  | STD  | EXT  | D   |
|----------|------|------|----|------|------|-----|
| 715 A1   | 2090 | 2300 | 50 | 2500 | 2500 | 200 |
| 715 A2   | 2245 | 2300 | 50 | 2500 | 2500 | 200 |
| 715 A3   | 2380 | 2300 | 50 | 2500 | 2500 | 200 |
| 715 A4   | 2410 | 2300 | 50 | 2500 | 2500 | 200 |
| 715 A5   | 2440 | 2300 | 50 | 2500 | 2500 | 200 |
| 715 A6   | 2475 | 2300 | 50 | 2500 | 2500 | 200 |
| 715 A3J3 | 2430 | 2400 | 50 | 2500 | 2500 | 200 |

SPAZIO RICHIESTO PER L'INSTALLAZIONE  
NECESSARY SPACE FOR INSTALLATION

| 715      | Con attivazioni-With extra function |      |
|----------|-------------------------------------|------|
| 715 A1   | 1000                                | 1110 |
| 715 A2   | 1000                                | 1110 |
| 715 A3   | 1000                                | 1110 |
| 715 A4   | 1000                                | 1110 |
| 715 A5   | 1050                                |      |
| 715 A6   | 1050                                |      |
| 715 A3J3 | 1110                                |      |

## 

F.lli FERRARI CORPORATION S.p.A.  
Via Pasubio, 3  
42022 Boretto (RE) Italy  
Tel. +39 0522/964921  
Fax +39 0522/964405  
E-mail: marketing@flliferrari.it

M.K.T. 5800105 03/04 3000



# 715

**RED POWER**

## 

F.LLI FERRARI CORPORATION S.p.A.

# Ferrari 715



I

La gru F.Ili Ferrari mod. 715 racchiude in se caratteristiche tecniche e meccaniche di elevata qualità

- Acciai ad alto limite di snervamento
- Basamento e pignone colonna in fusione
- Struttura interamente sabbiata
- Bracci esagonali
- Sbracci fino a 16.60 m (20.71 con prolunga meccanica)
- Valvole di sicurezza flangiata
- Valvola rigenerativa sugli sfili idraulici
- Comandi bilaterali
- Raccordi girevoli su distributore
- Limitatore di momento (CE)
- Stabilizzatori rotanti
- Stab. estendibili idraulicamente
- Piattello stabilizzatore snodato
- Pattini di scorrimento con ripresa gioco autoserrante
- Boccole autolubrificanti
- Raccorderia SAE J 1514I
- Gancio girevole
- Kit di montaggio compreso
- Red Power

**Accessori**

- Prolunghe meccaniche
- Versione braccio corto SC
- Comandi supplementari attivati\*
- Stabilizzatori extraestendibili (6.000)
- Traverse supplementari
- Distributore proporzionale Compensato Danfos PVG 32
- Utilizzo con attrezzo\*
- Dispositivo di controllo RLC
- Verricello idraulico
- ECM Electronic Crane Manager
- Comando a distanza
- Scambiatore di calore
- Sedile

\*) solo/only A1-A2-A3-A4

GB

The crane model 715 from F.Ili Ferrari has been projected and manufactured with high quality technical and mechanical characteristics

- Steel at high yielding edge
- Basement and column pinion by melding made
- Structure fully sandblasted
- Hexagonal booms
- Hydraulic outreach until 16.60 mt (20.71 with mechanical boom)
- Flanged valves
- Regenerating valve on hydraulic booms
- Bilateral controls
- Turning fittings on the control valve
- Load limiting device (CE)
- Turning outriggers
- Hydraulic opening cylinders
- Articulated outrigger plate
- Sliding pad with self-adjusting gap
- Self-tapping bushings
- SAE JIC 1514I fittings
- Turning hook
- Mounting kit included
- Red Power

**Accessories**

- Mechanical booms
- Short arm configuration SC
- Extra functions\*
- Extra wide outriggers (6.000)
- Extra beams
- Proportional control valve Danfoss PVG 32
- Use with special equipments\*
- Load radio checking device RLC
- Hydraulic winch
- ECM Electronic Crane Manager
- Remote control
- Oil cooler
- Top seat

F

LA grue modèle 715 F.Ili Ferrari est conçue avec des caractéristiques techniques et mécaniques de plus haute qualité

- Acier à haut niveau de déformation plastique
- Embase et pignon colonne moulés
- Structure complètement sablée
- Rallonges hexagonales
- Portée Hydraulique jusqu'à 16.60 Mt (20.71 mt avec rallonges mécaniques)
- Vannes bridées
- Vanne regeneration huile sur rallonges hydrauliques
- Commandes bilatérales
- Raccords tournants sur distributeur
- Limiteur de moment (CE)
- Béquilles tournantes
- Béquilles à ouverture hydraulique
- Plat d'appui béquille avec joint à rotule
- Patins de coulissement auto enregistrables
- Douilles autolubrificantes
- Raccords SAE-JIC 1514I
- Crochet tournant
- Kit de montage inclus
- Red Power

**Accessoires**

- Rallonges mécaniques
- Version bras court SC
- Circuits supplémentaires activées\*
- Béquilles extra larges (6.000)
- Poutres à quilles supplémentaires
- Distributeur proportionnel Danfoss PVG 32
- Utilisation avec accessoires\*
- Dispositif de contrôle de la charge RLC
- Treuil hydraulique
- ECM Electronic Crane Manager
- Commande à distance
- Refroidisseur huile
- Siège en haut

D

Das Kranmodell 715 vom F.Ili Ferrari ist mit höchsten Qualität für technischen und mechanischen Eigenschaften projiziert und hergestellt worden

- Stahl am hohen einträglichen Rand
- Sockel und Zahnrad beim Schmelzen gemacht
- Struktur voll Sand gestrahlt
- Sechseckige Ausschube
- Hydraulischen Reichweiten bis 16.60 mt. (20.71 mt mit mechanischen Ausschube)
- Geflanscht Ventilen
- Regenerations-Ventil auf die Ausschube
- Zweiseitige Kontrollen
- Drehbar Anschlusse auf Steuerung
- Lasthaltventil (CE)
- Drehbar Abstützungen
- Abstützungen mit hydraulischen Öffnung
- Gelenkstutzscheibe
- Gleitschuh mit Selbstnachsteller Spiel
- Selbstschmierende Buchsen
- SAE-JIC 1514I Anschlusse
- Schwenkbar Haken
- Einsatzbau eingeschlossen
- Red Power

**Zubehöre**

- Mechanische Ausschube
- Kurzer Arm Ausführung SC
- Zusatzfunktionen\*
- Extra-weit Abstützungen (6.000)
- Zusatzabstützungen
- Proportional Steuerung Danfoss PVG 32
- Benutzung mit Zubehöre\*
- Gewichtskontrolle Vorrichtung RLC
- Hydraulischer Winde
- ECM Electronic Crane Manager
- Fernsteuerung
- Ölkühler
- Hochsitz

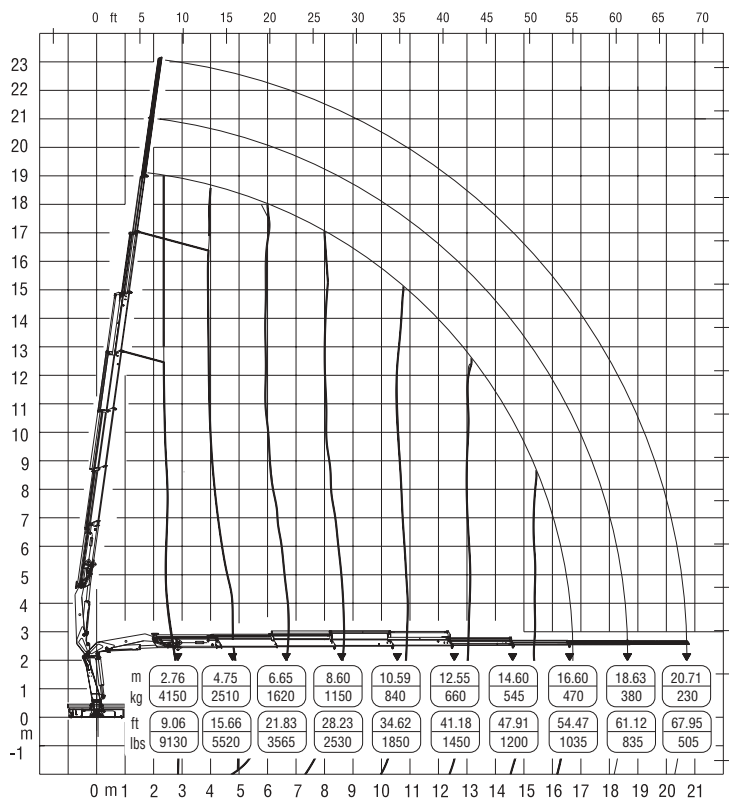
SP

El modelo de la grúa 715 de F.Ili Ferrari se ha proyectado y fabricado con características técnicas y mecánicas de alta calidad

- Acero en el alto borde de rendimiento
- Piñón de la columna y basamento moldeados
- Estructura completamente arenada
- Prolongas hexagonales
- Alcances hidraulicos hasta mt. 16.60 (20.71 mt con prolongas mecanicas)
- Valvulas rebordeadas
- Valvula de regeneración sobre las prolongas
- Mandos bilaterales
- Empalmes giratorios sobre distribuidor
- Limitador de momento (CE)
- Patas giratorias
- Patas con abertura hidraulica
- Patín de deslizamiento con juego autoregular
- Plato de apoyo de patas articulado
- Casquillos autolubrificantes
- Empalmes SAE-JIC 1514I
- Gancho giratorio
- Kit de montaje incluido
- Red Power

**Accesorios**

- Prolongas mecanicas
- Versione brazo corto SC
- Activaciones adicionales\*
- Patas extra-largas (6.000)
- Patas adicionales
- Distribuidor proporcional Danfoss PVG 32
- Utilización con accesorios\*
- Dispositivo de verificación de carga RLC
- Cabrestante hidraulico
- ECM Electronic Crane Manager
- Mando a distancia
- Cambiador de calor
- Puesto de mando arriba



Questo dispositivo visualizza su un display collocato in prossimità dei comandi il carico applicato al gancio della gru, rendendo l'utilizzo delle prolunghe meccaniche sicuro secondo la normativa europea EN 12999.

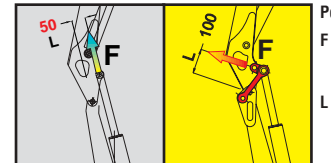
This device shows the load at the hook on a display placed near the controls, making safe the use of the mechanical booms following the European rule EN 12999.



**RED POWER, FINO AL DOPPIO DELLA POTENZA\***

**RED POWER, TWICE THE POWER\***

STANDARD RED POWER



Potenza/Power = F x L

F = Forza del martinetto / Strength of the jack luff cylinder

L = Leva del martinetto / Lever of the jack luff cylinder

POWER 50% POWER 100%

Red power è sinonimo di maggior potenza di articolazione dei bracci gru, realizzato tramite un sistema di bielle di articolazione.

"Red Power" means more leverage to the crane booms. This leverage is achieved through an articulating connecting rod system.



\*) In posizione verticale / In the vertical position

**RED POWER**

**Ferrari**