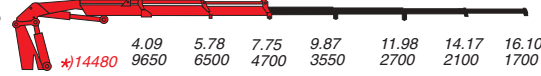

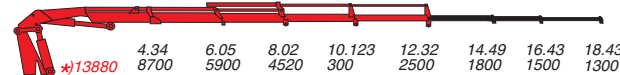
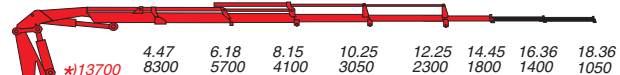
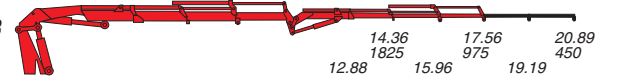
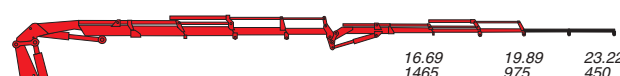


940

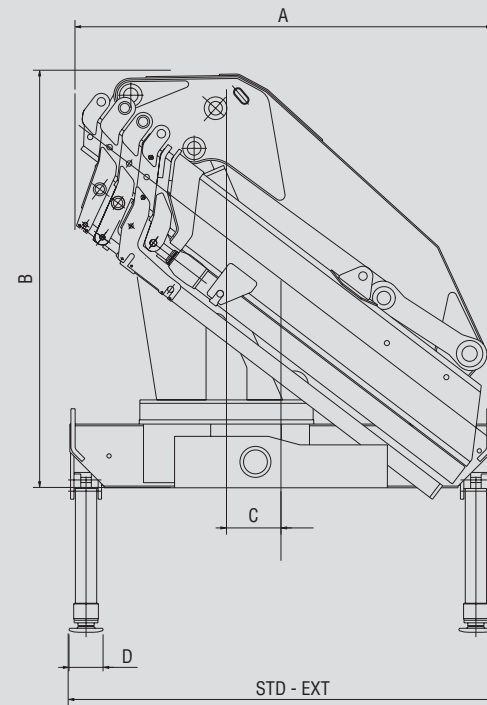
MODELLI MODELS	MOMENTO LIFTING MOMENT	SBRACCIO ORIZ. HORIZ. HYDRAULIC OUTREACH	PORTATA AL DISTRIBUTORE OIL FLOW TO THE CONTROL VALVE	SBRACCIO MAX. VERTICALE MAX VERTICAL REACH	PESO WEIGHT	PRESSIONE PRESSURE	INTERASSE STABILIZZATORI STANDARD APERTI DISTANCE BETWEEN CENTRES WITH OPENED OUTRIGGERS	INTERASSE STAB. EXTRA APERTI EXTRA WIDE DISTANCE BETWEEN CENTRES WITH OPENED OUTRIGGERS
	Tm.	m.	l/min	m.	Kg	bar	mm.	mm.
940 A2	39.6	7.75	65	11.74	4653	260	6020	8520
940 A3	39.50	9.98	65	13.85	4973	260	6020	8520
940 A4	38.00	12.32	65	16.05	5233	260	6020	8520
940 A5	37.35	14.45	65	18.08	5423	260	6020	8520
940 A3J3	39.5	17.56	65	20.86	5771	260	6020	8520
940 A4J3	38.00	19.89	65	23.06	6043	260	6020	8520

Autocarro consigliato - Recommended truck - Camion conseille - Camion aconsejado
M.T.T. ton 24 - G.V.W. ton 24

STANDARD	STANDARD CE
 420° Angolo di rotazione Slewing angle	 1250 Serbatoio olio Oil Tank
 Limitatore di momento Overload device	

940 A2		4.09	5.78	7.75	9.97	11.98	14.17	16.10
m								
Kg	*)14480	9650	6500	4700	3550	2700	2100	1700
940 A3		4.23	5.91	7.88	9.98	12.09	14.27	16.21
m								
Kg	*)14180	9350	6400	4650	3500	2600	2000	1600
940 A4		4.34	6.05	8.02	10.123	12.32	14.49	16.43
m								
Kg	*)13880	8700	5900	4520	300	2500	1800	1500
940 A5		4.47	6.18	8.15	10.25	12.25	14.45	16.36
m								
Kg	*)13700	8300	5700	4100	3050	2300	1800	1400
940 A3J3					14.36	17.56	19.89	20.89
m					1825	975	450	
Kg					12.88	15.96	19.19	450
					2245	1275	750	
940 A4J3					16.69	19.89	23.22	
m					1465	975	450	
Kg					15.21	18.29	21.52	
					1630	1275	750	

*) PORTATA MAX A DISTANZA MINIMA
MAX LIFTING CAPACITY AT MIN. HOOK DISTANCE



940	A	B	C	STD	EXT	D
940 A2	2210	2450	320	2500	2500	200
940 A3	2340	2450	320	2500	2500	200
940 A4	2450	2450	320	2500	2500	200
940 A5	2450	2450	320	2500	2500	200
940 A3J3	2470	2470	320	2500	2500	200
940 A4J3	2470	2470	320	2500	2500	200

SPAZIO RICHIESTO PER L'INSTALLAZIONE
NECESSARY SPACE FOR INSTALLATION

940	Con attivazioni-With extra function
940 A2	1265
940 A3	1265
940 A4	1265
940 A5	1265
940 A3J3	1565
940 A4J3	1565

F.lli FERRARI CORPORATION S.p.A.

Via Pasubio, 3

42022 Boretto (RE) Italy

Tel. +39 0522/964921

Fax +39 0522/964405

E-mail: marketing@fliferrari.it

Dati, descrizioni e illustrazioni sono indicativi e non impegnano F.lli Ferrari. Gru prodotte e/o commercializzate da F.lli Ferrari - Data, descriptions and illustrations are merely indicative and not binding. Cranes manufactured and marketed by F.lli Ferrari - Les données, descriptions et illustrations sont uniquement indicatives et n'engagent pas F.lli Ferrari. Grues produites et/ou vendues par F.lli Ferrari - Angaben, Beschreibungen und Abbildungen sind weisend und verpflichten nicht F.lli Ferrari. Die Kräne werden von F.lli Ferrari hergestellt und/oder vermarktet - Los datos, las descripciones y las ilustraciones son indicativos y no implican compromiso para F.lli Ferrari. Gruas producidas y/o comercializadas por F.lli Ferrari - Os dados as descrições e ilustrações são indicativos e não comprometem F.lli Ferrari. Guindaste produzidos e/ou comercializados pela F.lli Ferrari.

M.K.T. 5800120 05/04 3000




940

940

RED POWER

F.LLI FERRARI CORPORATION S.p.A.

Ferrari 940



I

La gru F.II Ferrari mod. 940 racchiude in se caratteristiche tecniche e meccaniche di elevata qualità

- Acciai ad alto limite di snervamento
- Struttura interamente sabbiata
- Bracci esagonali
- Sbracci fino a 14.45 m (19.89 con Jib)
- Valvole di sicurezza flangiata
- Comandi bilaterali
- Raccordi girevoli su distributore
- Limitatore di momento (CE)
- Stabilizzatori fissi
- Stab. estendibili idraulicamente
- Pattini di scorrimento con ripresa gioco autoserrante
- Boccole autolubrificanti
- Raccorderia SAE J 1514I
- Gancio girevole
- Kit di montaggio compreso
- Red Power

Accessori

- Prolunghe meccaniche
- Piattello stabilizzatore snodato
- Traverse supplementari
- Comandi supplementari attivati
- Verricello idraulico
- Comando a distanza
- Sedile
- Utilizzo con attrezzo
- Dispositivo di controllo RLC
- Scambiatore di calore

GB

The crane model 940 from F.II Ferrari has been projected and manufactured with high quality technical and mechanical characteristics

- Steel at high yielding edge
- Structure fully sandblasted
- Hexagonal booms
- Hydraulic outreach until 14.45 mt (19.89 with Jib)
- Flanged valves
- Bilateral controls
- Turning fittings on the control valve
- Load limiting device (CE)
- Fixed outriggers
- Hydraulic opening cylinders
- Sliding pad with self-adjusting gap
- Self-tapping bushings
- SAE JIC 1514I fittings
- Turning hook
- Mounting kit included
- Red Power

Accessories

- Mechanical booms
- Extra beams
- Extra functions
- Hydraulic winch
- Remote control
- Top seat
- Use with special equipments
- Load radio checking device RLC
- Oil cooler

F

La grue modèle 940 F.II Ferrari est conçue avec des caractéristiques techniques et mécaniques de plus haute qualité

- Acier à haut niveau de déformation plastique
- Structure complètement sablée
- Rallonges hexagonales
- Portée Hydraulique jusqu'à 14.45 Mt (19.89 mt avec Jib)
- Vannes bridées
- Commandes bilatérales
- Raccords tournants sur distributeur
- Limiteur de moment (CE)
- Béquilles fixes
- Béquilles à ouverture hydraulique
- Patins de coulissement auto enregistables
- Douilles autolubrifiantes
- Raccords SAE-JIC 1514I
- Crochet tournant
- Kit de montage inclus
- Red Power

Accessoires

- Rallonges mécaniques
- Poutres bâquilles supplémentaires
- Circuits supplémentaires activés
- Treuil hydraulique
- Commande à distance
- Siège en haut
- Utilisation avec accessoires
- Dispositif de contrôle de la charge RLC
- Refroidisseur huile

D

Das Kranmodell 940 vom F.II Ferrari ist mit höchsten Qualität für technischen und mechanischen Eigenschaften projiziert und hergestellt worden

- Stahl am hohen einträglichen Rand
- Struktur voll Sand gestrahlt
- Sechseckige Ausschube
- Hydraulischen Reichweiten bis 14.45 mt. (19.89 mt mit Jib)
- Geflanscht Ventilen
- Zweiseitige Kontrollen
- Drehbar Anschlüsse auf Steuerung
- Lasthaltventil (CE)
- Fest Abstützungen
- Abstützung mit hydraulischen Öffnung
- Gleitschuh mit Selbstnachsteller Spiel
- Selbstschmierende Buchsen
- SAE-JIC 1514I Anschlüsse
- Schwenkbar Haken
- Einsatzbau eingeschlossen
- Red Power

Zubehöre

- Mechanische Ausschube
- Zusatzabstützungen
- Zusatzfunktionen
- Hydraulischer Winde
- Fernsteuerung
- Hochsitz
- Benutzung mit Zubehöre
- Gewichtskontrolle Vorrichtung RLC
- Ölkühler

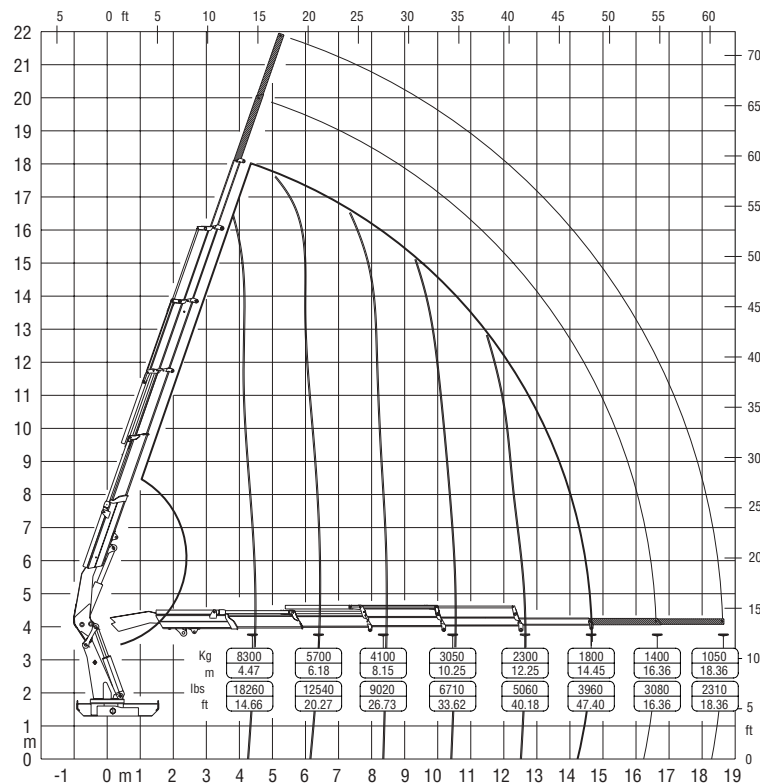
SP

El modelo de la grúa 940 de F.II Ferrari se ha proyectado y fabricado con características técnicas y mecánicas de alta calidad

- Acero en el alto borde de rendimiento
- Estructura completamente arenada
- Prolongas hexagonales
- Alcances hidráulicos hasta mt. 14.45 (19.89 mt con Jib)
- Válvulas rebordeadas
- Mandos bilaterales
- Empalmes giratorios sobre distribuidor
- Limitador de momento (CE)
- Patas fijas
- Patas con abertura hidráulica
- Patín de deslizamiento con juego autoregurable
- Casquillos autolubricantes
- Empalmes SAE-JIC 1514I
- Gancho giratorio
- Kit de montaje incluido
- Red Power

Accesorios

- Prolongas mecánicas
- Patas adicionales
- Activaciones adicionales
- Cabrestante hidráulico
- Mando a distancia
- Puesto de mando arriba
- Utilización con accesorios
- Dispositivo de verificación de carga RLC
- Cambiador de calor



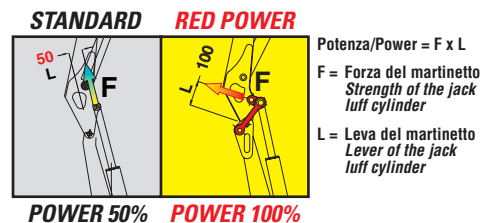
Questo dispositivo visualizza su un display collocato in prossimità dei comandi il carico applicato al gancio della gru, rendendo l'utilizzo delle prolunghe meccaniche sicuro secondo la normativa europea EN 12999.

This device shows the load at the hook on a display placed near the controls, making safe the use of the mechanical booms following the European rule EN 12999.



RED POWER, FINO AL DOPPIO DELLA POTENZA*

RED POWER, TWICE THE POWER*



Red power è sinonimo di maggior potenza di articolazione dei bracci gru, realizzato tramite un sistema di bielle di articolazione.

"Red Power" means more leverage to the crane booms. This leverage is achieved through an articulating connecting rod system.



RED POWER

Ferrari