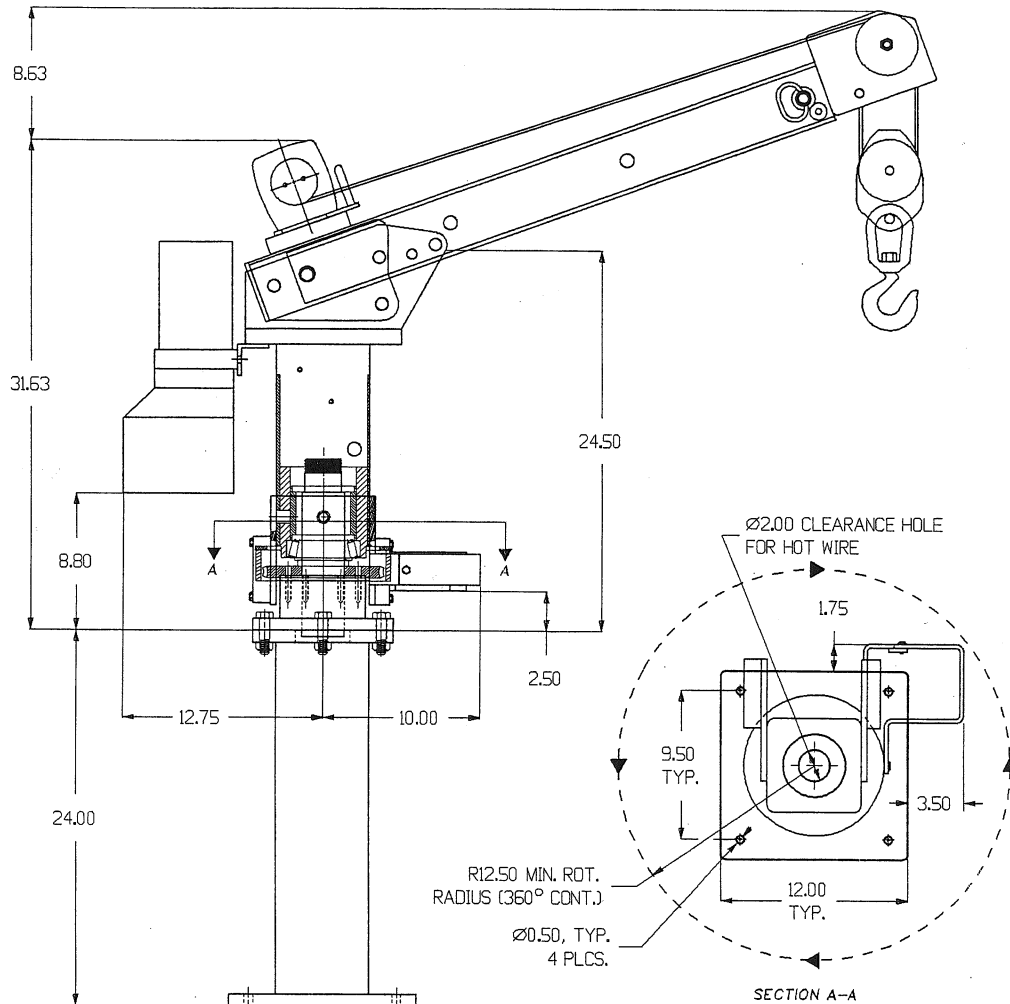


## SUGGESTED SPECIFICATIONS LIFTMOORE MODEL L-21RF AND L-21RF-7



**CAPACITY:** Moment Rating is 6,000 ft.-lb. with capacities as follows:

- \*2000 lb. at 3 ft.
- 1500 lb. at 4 ft.
- 1200 lb. at 5 ft.
- 1000 lb. at 6 ft. (L-21RF-7 Only)
- 857 lb. at 7 ft. (L-21RF-7 Only)

\*use traveling block double line on loads above 1600 Lbs.

**HOIST WINCH:** The hoist winch uses a planetary gear drive for most efficient operation. A 0.9 HP permanent magnet motor powers the winch. The single line capacity of the winch is 1600 Lbs. Integral mechanical, brake included with the winch. The winch motor is reversed by two, double pole solenoid. Winch performance is as follows:



11505 TODD ROAD  
HOUSTON, TEXAS 77055  
FAX: (800) 824-5559 (USA & Canada)  
FAX: (713) 688-6324  
PHONE: (713) 688-5533

Load(Lbs.)	Hook Speed(Ft./Min.)	AMP Draw
0	18.5	20
1000	12.7	63
1500	9.8	85

**WIRE ROPE AND SHEAVES:** The crane is supplied with 25 Ft. of 3/16 In. galvanized aircraft cable with a 4200 Lb. breaking strength. All sheaves meet ANSI requirements.

**ROTATION:** The hydraulic powered rotation is 360 degree continuous and unlimited. The crane rotates on two tapered roller bearings for least possible friction. The electric-hydraulic pump motor is controlled by a single pole solenoid. A high torque, low speed hydraulic motor drives the rotation through a 60:1 ratio self locking worm gear. The worm gear is with an aluminum bronze alloy and the worm is work hardened steel. The worm shaft rotates on two tapered roller bearings.

**BOOM:** 20 degree and 45 degree boom positions are standard. The boom telescopes manually from 3 Ft. to 5 Ft. with the boom at a 20 degree position. When the boom is at 45 degrees and 5 Ft., the maximum lift is 6 Ft. 9 In. The boom can be folded vertically for storage while traveling, with an overall height of 54 In. The L-21RF-7 boom has the same features as the L-21RF except it telescopes from 3'3" to 7'3" in three stages.

**PENDANT CONTROL:** A 12.5 Ft. remote pendant is supplied with each crane. For safest possible use, the pendant control is removable from the crane and each function is controlled by a momentary contact toggle switch.

**POWER CABLE:** The crane is supplied with 25 Ft. of battery power cable with quick disconnects, an additional 3 Ft. ground wire, and a 150 AMP circuit breaker.

**BATTERIES:** The crane is powered by a 12 VDC electric battery. Installation of a second battery near the crane is advised. This will maintain the voltage at the highest possible level and extend the life of the crane's motors and solenoids.

**MOUNTING:** Four 0.50 In. x 2.75 In. long, grade 8 Hex Head Cap Screws are supplied. The base plate is 12 In. square with a 9.5 In. bolt pattern.

**PEDESTAL:** Pedestal height can be 24 In. as shown on the drawing above or any other height depending upon need. A mounting plate can be supplied under the crane for mounting on top of a utility body compartment.

**ACCESSORIES:** An outrigger is necessary on most installations to keep the truck as level as possible and reduce the load on the rotation gear and on the trucks spring, axle, wheels, and tires. If an outrigger is not used a jackstand would be required for stability to keep the truck level. A boom rest is required unless the boom is stored in its vertical position when the truck is in motion. The boom rest is required on service body, mounted units.

**SHIPPING WEIGHT:** L-21RF: 455 Lbs  
L-21RF-7: 470 Lbs.



11505 TODD ROAD  
HOUSTON, TEXAS 77055  
FAX: (800) 824-5559 (USA & Canada)  
FAX: (713) 688-6324  
PHONE: (713) 688-5533