

The MTB Series 25 & 30 Liftgate

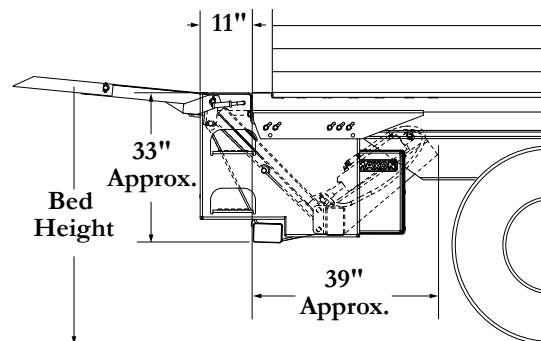
MTB - our "More Tuk-for-the-Buck" liftgate - gives you a lot more features than traditional liftgates without costing a penny more!

- Bolts directly onto the truck body, not to the chassis
- New adjustable side plates can accommodate up to 6" rear sill
- Integrated dock bumpers with two slip-resistant steps
- Heavy-duty side plates made of 1/4 inch formed steel
- Comes fully assembled
- Built-in underride*
- Engineered triangular parallel arms are strongest ever on a 2500/3000 lb. Tuk-A-Way gate
- The reinforced extension plate is the strongest ever manufactured by Maxon
- Pump and motor are protected from the elements
- Pump and motor assembly is securely attached to the main frame so it will not be lost; yet it is easy to remove
- Steel collar on pump/motor assembly deters theft
- "Cam" latch design ensures that the platform will lock with ease
- Clear and easy to read decals are factory installed
- New fully potted marine switch is standard
- Four-stage paint process
- A truck body with MTB attached can be removed and remounted on a different chassis
- Reduced bottlenecks at body companies quicken liftgate delivery

* Liftgate meets all FMVSS underride requirements



Model Capacity	Platform Size	Ramp	Total Weight	Bed Height
(2500 Lbs.)	35" x 72"	5"	1000 Lbs.	43" Min. w/ Body Laden
(3000 Lbs.)			1020 Lbs.	54" Max. w/ Body Unladen
Wedge (2500 Lbs.)	40" x 72" Wedge	N/A	1000 Lbs.	48" Min. w/ Body Laden
Wedge (3000 Lbs.)			1020 Lbs.	54" Max. w/ Body Unladen
Special Profile (2500 Lbs.)	40" x 72" 10" Aluminum Retention Ramp		1040 Lbs.	43" Min. w/ Body Laden
Special Profile (3000 Lbs.)			1055 Lbs.	54" Max. w/ Body Unladen



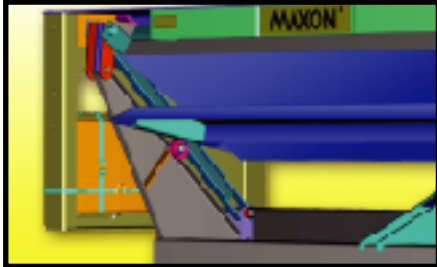
Lift Dimensions and Mounting Requirements



MTB SERIES SPECIFICATIONS

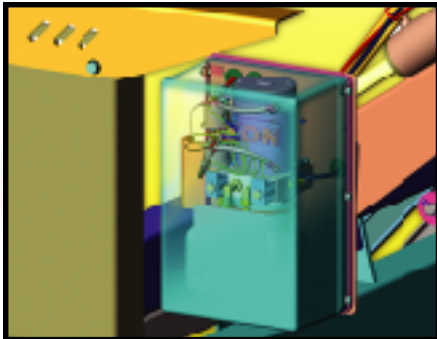
MTB 25 & 30 Liftgate

Bolt-on Flexibility



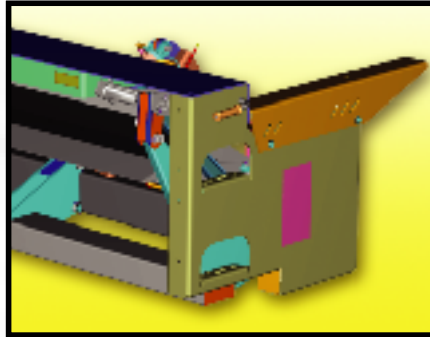
Bolt-on construction makes it an easy process to remove and remount the MTB on a new truck if required. The liftgate can also be removed with the body and placed on new chassis as a unit. And because the MTB requires no welding and repainting, trucks can be delivered up to two days sooner from the body company.

Protected Pump/Motor Assembly



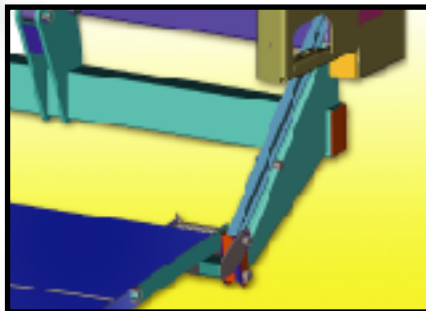
The pump and motor are factory wired and installed, and even shipped with oil in the reservoir. The assembly is protected from the elements by its cover, and the main frame to which it is securely attached. It's also easy to remove, if necessary. To discourage theft, the bolt to remove the pump and motor is protected with a lockable steel collar.

Integrated Side Plates with 2-Step Bumpers



MTB 25 and 30 feature integrated heavy-duty (1/4 inch formed steel) dock bumpers with two built-in, slip-resistant steps.

Strength of Arms & Extension Plate



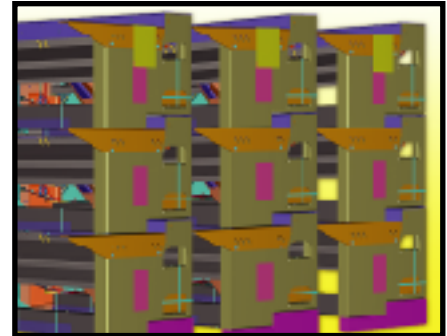
The engineering design on the arms ensures strength, light weight and long life. The reinforced extension plate built into the side plates is the strongest Maxon has ever built. The latching mechanism incorporates cam design for easier operation.

Superior 4-Stage Paint Process

Maxon's exclusive four-step paint process has twice the corrosion resistance of primer and paint alone. This finish is well-recognized in the industry for its quality and durability.



Shipped Fully Assembled



Unlike other liftgates, the MTB comes fully assembled, eliminating installer variability and error.

Optional Features

- Dock Bumper Rubber Pads
- Street Side Controls
- Power Down
- Cab Cut-off
- Hand-Held Controls

Distributed by:

MAXON®

Maxon Lift Corp.

11921 Slauson Ave., Santa Fe Springs, CA 90670
Tel: 562.464.0099 800.227.4116 Fax: 888.771.7713
www.maxonlift.com