



# ALL-PURPOSE TRUCK BODIES



Omaha Standard has engineered and built the toughest all-purpose body on the market.

The "Badger" is ideal for gooseneck hauling and rugged enough to withstand heavy day-in and day-out use. These attractive light-weight bodies offer you the best value available today for your 1/2, 3/4 or 1-ton chassis.

*Optional bulkhead work lights and underbody toolbox shown.*

## "BADGER" FEATURES

- 43/16" 12-gauge high strength steel channel cross members.
- 4" structural channel long members (6" optional).
- Heavy-duty rectangular contoured tube single sheet bulkhead is welded to platform. Stylish laser profiled window is standard.
- Heavy-duty 1/4" x 2" banding rail to secure cargo.
- 1/8" thick treadplate steel floor and reinforced rear apron with three-light cluster and corner lights.
- FMVSS compliant clearance lights and reflectors. Wiring in loom harness.
- Center high mounted stop light (CHMSL).
- Stake pockets accommodate 2 x 4 lumber.
- Painted with rust inhibiting primer and high gloss black enamel topcoat.

MODEL	LENGTH	WIDTH	C.A.	APPROXIMATE WEIGHT
B8N	8'2"	82"	54"-60"	578 lbs.
<b>B8W</b>	<b>8'2"</b>	<b>96"</b>	<b>60"</b>	<b>628 lbs.</b>
B9N	9'	82"	60"	674 lbs.
<b>B9W</b>	<b>9'</b>	<b>96"</b>	<b>60"</b>	<b>729 lbs.</b>
B10W	10'	96"	84"	797 lbs.
<b>B11W</b>	<b>11'</b>	<b>96"</b>	<b>84"</b>	<b>866 lbs.</b>
B12W	12'	96"	84"	986 lbs.

Omaha Standard reserves the right to modify, change or revise published specifications and furnish products so altered without prior notice.

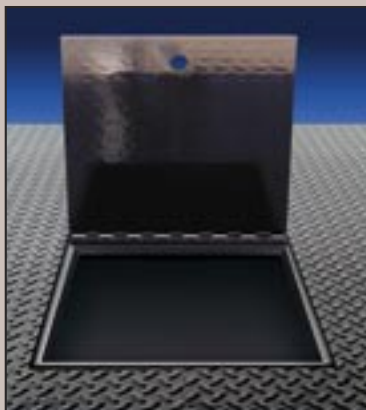
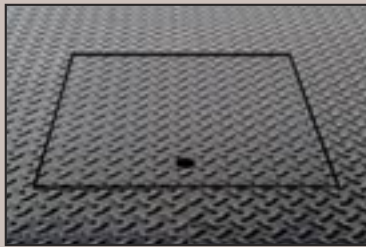


# ALL-PURPOSE TRUCK BODIES

## Optional Equipment



- Recessed rubber mounted work lights in bulkhead.



- Pop-Up Ball for quick hook ups, folds away in seconds.
- Gooseneck style hinged door, flush mounted.  
8" structural channel drawbar included.
- Rear stake pockets and banding rail.
- Angled ICC step bumper.
- Omaha "Strongbox" underbody toolboxes.



*We Create Value...*

## Omaha Standard

2401 West Broadway, Council Bluffs, Iowa 51501  
712-328-7444 ■ FAX: 800-568-7444  
800-279-2201

**SOLD BY:**