

# Covering the Heavy Duty Truck and Waste Industries since 1977

**HAMMER** Premium Dump Body Tarping System



**DURABUILT** High Torque Electric Direct Drive Motor



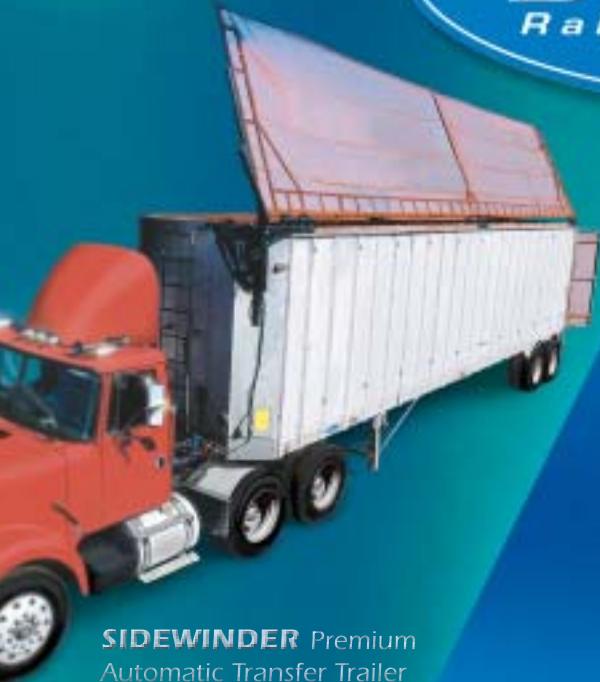
**BULLET** Premium Dump Body Tarping System (Aluminum Arm)

ENTERPRISES  
**Donovan**  
*Raise The Standard*

**Tarps** Stock, and Custom for Trucks, Trailers and more!



**SIDEWINDER** Premium Automatic Transfer Trailer Tarping System



**MANTIS** Premium Automatic Rolloff Tarping System



**800.327.8287**  
**[www.donovan-ent.com](http://www.donovan-ent.com)**

**Call the Friendly, Knowledgeable Team at  
Donovan for All of Your Tarping Needs!**



**Donovan Enterprises  
3353 SE Gran Park Way  
Stuart, Florida 34997**



**800.327.8287  
www.donovan-ent.com**

Donovan Enterprises is the world's leading manufacturer of tarps, tarp mechanisms and accessories for the trucking industry. Since 1977, Donovan Enterprises has continued to set and "Raise the Standard" of excellence in our industry.

Our mission is to bring value to our customers through quality products, fair pricing and the best customer service possible. The importance we place on the latter sets Donovan apart. You may find other manufacturers that offer a good product or a low price, but you won't find the complete package you'll get from Donovan.

As a Donovan customer, you are supported by ...

- The largest, most experienced and capable nationwide team of field sales representatives in the industry. If you are a Donovan customer, you already know this. Many of our sales reps have over 15 years experience with Donovan!
- In addition to our outside team, we offer an unparalleled team of inside sales representatives averaging 10 years of Donovan sales and service experience!
- The most complete line of tarps, tarp mechanisms and related accessories for the dump trucking and solid waste hauling industries in the industry!

It is this experience and attention to our customers that has repeatedly turned first-time buyers into life-long customers. Whatever your tarping need, Donovan offers more experience in the industry and a more complete line of quality products than any other manufacturer. Give Donovan a try. Let us earn your business!

# Table of Contents

<b>Product</b>	<b>Pages</b>
<b>Heavy Duty Truck Covering Systems</b>	<b>4-19</b>
<b>Bedlining Systems</b>	<b>20-22</b>
<b>Waste Covering Systems</b>	<b>23-35</b>
<b>Tarps for the Waste Industry</b>	<b>36-37</b>
<b>Tarps for the Heavy Duty Truck Industry</b>	<b>38-39</b>
<b>Tarp Accessories</b>	<b>40</b>
<b>Tarps for Animal Shade</b>	<b>41</b>
<b>Covering System Options</b>	<b>42</b>



*The Fastest Install on the Market!*

Heavy Duty  
Truck Covering  
Systems



- Product: Turbo Tap  
Model(s): (#4200) Turbo Tarp (standard)  
              (#4200P) Turbo Tarp with pull bar assy.  
Description: Economy, manual wind-up, front to rear tarp mechanism  
Use: Any length body  
Options: Mesh tarps, water-resistant and waterproof tarps  
          Tarp side flaps  
          Composite pull bar  
Highlights: • Installs in minutes  
              • Overall simplicity and low price make Turbo Tarp  
                  perfect for landscapers and light duty bodies  
              • Covers any length truck body  
              • Constructed with heavy duty bearings and  
                  machined UHMW end caps  
              • Roller spline groove allows for quick and easy tarp  
                  replacement  
              • Affordable for all haulers  
              • Ships pre-assembled  
              • Ships UPS

# TurboTarp

*The Fastest Install on the Market!*

Heavy Duty  
Truck Covering  
Systems



- Simple!
- Affordable!
- Low maintenance!



- Any length body!
- Ships pre-assembled!
- Ships UPS!



- Fastest install on the market!

Donovan Enterprises • 3353 SE Gran Park Way • Stuart, FL 34997  
email: [info@donovan-ent.com](mailto:info@donovan-ent.com) • 800-327-8287 • [www.donovan-ent.com](http://www.donovan-ent.com) • 772-286-3350

# 2000 Pull Style Series

Heavy Duty  
Truck Covering  
Systems



2000SR



2000X

- Product: 2000 Series  
Model(s): (#165) 2000SR; spring return roller bar  
(#48) 2000X; cab level crank return  
Description: Armless front to rear tarping systems  
Use: Dump trucks and trailers, rolloff containers and other open-top containers  
Options: Mesh, water-resistant and waterproof tarps  
Tarp side flaps  
Premium wind deflector featuring rounded design and powder coated finish (SR only)  
Composite pull bar assembly
- Highlights:
- 2000X covers bodies up to 50' long
  - 2000SR covers bodies up to 26' long (20'w/tarp side flaps)
  - Adjustable "one size fits all" housing and roller bar allows dealers to serve more customers with less inventory!
  - Lifetime roller spring warranty (2000SR)
  - Install in 1 hour or less!
  - Fully automatic tarp return (2000SR only)
  - As low maintenance as tarpers get!

# 2000 Pull Style Series



Heavy Duty  
Truck Covering  
Systems

## 2000SR

The 2000SR pull-over tarp is adjustable to fit any truck body or trailer. This means easy, quick installation and no special ordering! The 2000SR will fit your truck right off the shelf!

# 5000 Series

Heavy Duty  
Truck Covering  
Systems

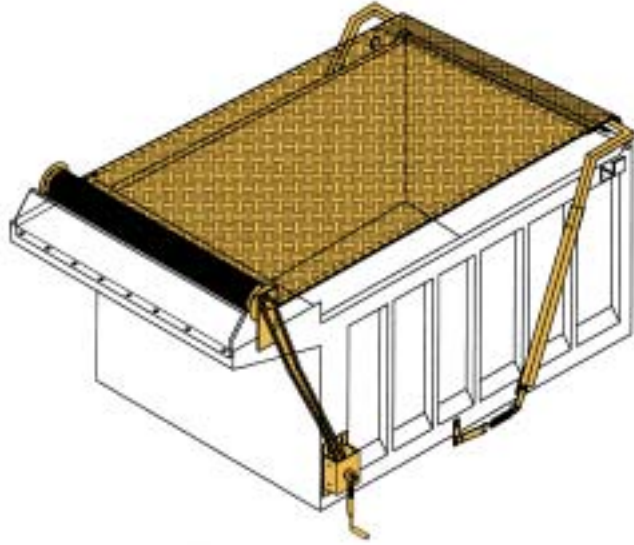


## 5000

### *Economy Series*

- Product: 5000 Series
- Model(s): (#343) 5000 S; cab level crank, sidespring  
(#1675) 5000 SU; cab-level crank, underbody spring  
(#344) 5000 GL; ground-level crank, sidespring  
(#1679) 5000 GLU; ground-level crank, underbody spring  
(#168) 5000 ELD; automatic electric return, sidespring  
(#161) 5000 ELUD; automatic electric return, underbody spring
- Description: Economy, front to rear pivot arm systems
- Use: Dump bodies up to 18'
- Options: Electric direct drive motor (3-yr. full replacement warranty)  
Underbody spring  
Mesh, water-resistant and waterproof tarps  
Tarp side flaps
- Highlights:
- Covers up to 18'
  - Quick and easy install
  - Rugged 1 1/4" steel tube construction
  - Durability at economical price

# 5000 Series



Cab level crank



Ground level crank



Underbody spring design



Direct drive electric

Heavy Duty  
Truck Covering  
Systems

# 7000 All-Purpose Series



This all-purpose system covers dump bodies up to 20 feet long. Available in ground level crank model or with electric direct drive motor.

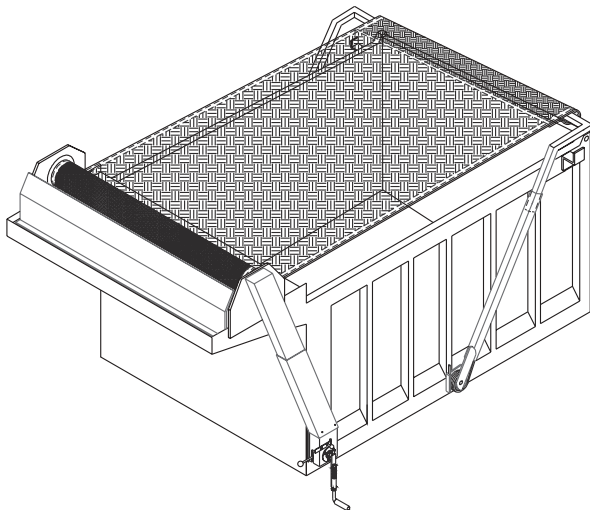
- Product: 7000Series  
Model(s): (#35) 7000ELD; automatic electric direct drive  
          (#1294) 7000GL; manual ground-level crank  
Description: Heavy duty, all-purpose front to rear pivot arm tarp systems  
Use: Dump bodies up to 20' long  
Options: Electric direct drive motor with solenoid QuickSwitch  
          (Best in Industry)  
          Widest variety of mesh, water-resistant and waterproof tarps  
          Tarp side flaps  
Highlights: • 3-yr full replacement warranty on direct drive motor!  
          • Covers up to 20'  
          • 1 1/2" square tube "easy off" pivot arms  
          • Bent pivot arm extensions avoid loader damage  
          • Heavy duty 1/2" chrome-silicone torsion springs  
          • Wind deflector included  
          • Chain guard included (ground level version only)  
          • Pivot arm rests included

# 7000 All-Purpose Series

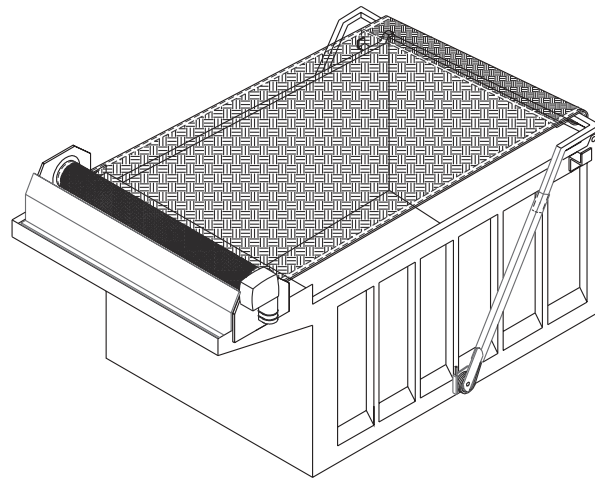


Silicone Torsion Spring

- Fits up to 20ft. bodies
- 1 1/2" square tube "easy off" pivot arms
- Bent pivot arm extensions
- 1/2" chrome silicone torsion springs
- Wind deflector
- Chain Guard
- Pivot arm rests



7000GL



7000ELD



Heavy Duty  
Truck Covering  
Systems



Each Hammer comes with 8 long-life torsion springs made of silicone chrome steel.



- Product: Hammer
- Model(s): (#2942) Hammer; incl. elec. direct drive motor and cab mount switch  
(#2942GL) Hammer GL; ground level crank version
- Description: Heavy duty, round steel tube, front to rear pivot arm taper for dump bodies
- Use: Dump bodies up to 23'
- Options: Ground level crank  
Widest variety of mesh, water-resistant and waterproof tarps  
Tarp side flaps
- Highlights:
- 3-yr full replacement motor warranty!
  - Solenoid Quick Switch (standard) is best switch in the industry!
  - Tough, simple and affordable
  - Galvanized wind deflector (standard)
  - Quick and easy installation
  - Rugged extruded aluminum roller bar allows tarp install in minutes
  - 4 long-life silicone chrome torsion springs per side



- New Solenoid QuickSwitch
- Chrome motor cover
- Durabuilt direct drive motor
- 3-year full replacement warranty on motor!

Heavy Duty  
Truck Covering  
Systems



Rear cross piece removes in minutes for a quick tarp change.



Unique extruded roller is durable and allows tarp attachment without use of bolts or screws.



## and Trailer Bullet

Heavy Duty  
Truck Covering  
Systems



- Product:** Bullet, Trailer Bullet
- Model(s):** (#2858) Bullet; includes electric direct drive motor and cab mount switch  
 (#2858GL) Bullet GL; ground level crank version  
 (#2937) Trailer Bullet; includes electric direct drive motor and cab mount switch  
 (#2937GL) Trailer Bullet GL; ground level crank version
- Description:** Top of the Line! Premium, high gloss aluminum front to rear pivot arm tarp system for dump bodies.
- Use:** Dump bodies up to 23' (Bullet and Bullet GL)  
 Dump trailers up to 38' (Trailer Bullet and Trailer Bullet GL)
- Options:** Electric or hand crank  
 Wide variety of tarp materials and designs  
 30° bent arms keep arms away from loader  
 Underbody spring (option for Bullet; standard on Trailer Bullet)
- Highlights:**
- 3-yr full replacement motor warranty!
  - Solenoid Quick Switch (standard) is best switch in the industry!
  - Diamond plate wind deflector (standard)
  - Quick and easy installation
  - Rugged extruded aluminum roller bar allows tarp install in minutes
  - 4 long-life silicone chrome torsion springs per side



Optional 30° bent arm design



Sleek Bullet shaped profile

Donovan Enterprises • 3353 SE Gran Park Way • Stuart, FL 34997  
 email: info@donovan-ent.com • 800-327-8287 • www.donovan-ent.com • 772-286-3350

# BULLET

## and Trailer Bullet



Premium Series



- New Solenoid QuickSwitch
- Chrome motor cover
- Durabuilt direct drive motor
- 3-year full replacement warranty on motor!

Heavy Duty  
Truck Covering  
Systems



Rear cross piece removes in minutes for a quick tarp change.

## Trailer Bullet



Trailer Bullet spring and housing

Donovan Enterprises • 3353 SE Gran Park Way • Stuart, FL 34997  
email: [info@donovan-ent.com](mailto:info@donovan-ent.com) • 800-327-8287 • [www.donovan-ent.com](http://www.donovan-ent.com) • 772-286-3350



*Manually Operated Cable Tarping System*

Heavy Duty  
Truck Covering  
Systems



### Features and Benefits:

Cover any load over any length truck or trailer. With the Donovan Bowslider, your load is covered quickly and safely: no tie-downs or climbing! Models are available in virtually any width you may need and our bows have a 6", 12" or 18" rise. The Bowslider comes standard with a vinyl tarp, however mesh is also available. Tarps can be made either "anti-pollution" or "semi waterproof."

The Bowslider is a hand crank operated, accordion-style cable tarping system for all length dump bodies. The heavy duty galvanized steel bows slide on cables running down the length of the dump body. Simply unlock the crank, start turning, and the bows slide forward and backward covering and uncovering your load safely from the ground.

The Bowslider is easy to install. As much pre-assembly as possible is done in our factory. The front assembly comes ready to bolt on to the dump body. All of the bearings, pulleys, sprockets and shaft are pre-assembled. All the installer has to do is bolt (or weld) on the front assembly and rear pulleys and feed the cable through the ends of the bows.





*Manually Operated Cable Tarping System*

Heavy Duty  
Truck Covering  
Systems



We offer the Bowslider with fully adjustable pulley assemblies in both steel or aluminum for maximum ease of installation.



The Bowslider makes loading your dump easy! When fully retracted, the entire system takes up minimal space, allowing plenty of clearance for loaders. Bows are available in virtually every width you may need and we offer 18", 12", or 6" rise bows. These options allow a Bowslider to cover any trailer even with peaked loads. Our bows are made of heavy gauge galvanized steel for durability. Our bows also have UHMW plastic sheathing on the ends for easy sliding along the top rails.



The Bowslider comes with a one year warranty against defects in workmanship.





Manually Operated Cable Tarping System

Heavy Duty  
Truck Covering  
Systems



### Anti-Lift Feature

New universal design anti-lift devices keep your system secure on the dump body: no flapping in the wind! We provide the quantity you need based upon the length of your system.



### Drive Options:

- Eliminate manual hand crank cable system
- Convert easily to automatic (electric)
- Our hollow shaft motor is the most advanced motor for cable systems available!
- 3-year full replacement warranty!
- No more chain drives! Hollow shaft is the way to go!



*Manually Operated Cable Tarping System*

Heavy Duty  
Truck Covering  
Systems

### Anti-Pollution



This is a chain driven model (electric optional) designed to keep your load from blowing or spilling on the highway. This model comes with either a mesh tarp or vinyl tarp. The tarp will come to the inside edge of the body/trailer. It will not keep any water out, even when using the solid vinyl material.



- Mesh - good for dirt, sand, stone, etc.
- Vinyl - ideal for super fine or dusty materials or when customer prefers a solid cover or larger selection of colors. Also suitable for asphalt in most states.

### Semi-Waterproof



This is a chain driven model (electric optional) with a vinyl tarp similar to the anti-pollution model. The important difference is the addition of a strip of PVC to the side edges of the tarp to widen it past the inside edge of the box. This special watershed flap causes the water to run off the tarp and keeps the load dry.



### Mesh



Our mesh Bowslider tarps are constructed of 1000 denier PVC coated mesh. All of our bow pockets are double vinyl reinforced and have seat belt webbing reinforcement on all sides. All Bowslider tarps feature double lock-stitch construction.



# DiamondSlide Bedliners



A custom liner for all your hauling needs

## DiamondSlide HEAVYDUTY™

- 100% Virgin UHMW (Ultra High Molecular Weight) material.
- Used for the most abrasive, high impact and high temperature application, (incl. asphalt hauling.)
- 4 x tougher than aluminum at half the weight.
- 2 x tougher than steel.

## DiamondSlide MEDIUMDUTY™

- 100% Virgin HMW (High Molecular Weight) material.
- Ideal for less abrasive applications and where sticking is the major problem.
- Good impact resistance.
- Wears like aluminum.

## DiamondSlide COMBO LINER™

- Ideal for nearly all hauling applications except asphalt and boulders.
- High slip, economical price HMW in front.
- High wear resistance of UHMW in back.



- 8', 10' and NEW 12' material in stock
- By the roll or sheet
- Custom kits available
- Accessories



## DiamondSlide Works for You

- Provides maximum protection against wear and tear on your trailer.
- Sticky, wet, frozen materials release faster and better with DiamondSlide.
- No need to slam your tailgate or stand your trailer on end for stuck loads.
- Complete discharge by 3rd stage saves wear on cylinders and hoists.
- Haul more loads per day.

Donovan Enterprises • 3353 SE Gran Park Way • Stuart, FL 34997  
email: [info@donovan-ent.com](mailto:info@donovan-ent.com) • 800-327-8287 • [www.donovan-ent.com](http://www.donovan-ent.com) • 772-286-3350

# DiamondSlide Comboliner

Double the life of your Mediumduty liner!  
Cut half the price off your HEAVYduty liner!



**COMBOLINER™**  
can be used in  
almost every  
hauling application.

**COMBOLINER™** combines the high wear-resistant characteristics of UHMW in the rear of the liner with the high slip but economical price of HMW in the front of the liner.

**COMBOLINER™** is your best choice for optimum performance and value.



Lasts 3X longer  
than full length  
medium duty.

The right material  
in the right place.

The most value  
and life for your  
purchase.

*"I've been running one of my trailers with a DiamondSlide liner in it, and it really works great. That's why I ordered DiamondSlide for my other trailer. Two days before I was supposed to get the new liner I tipped the trailer. It was windy and we were hauling wet fly ash. The trailer with the liner was getting good release, even though the load sat overnight; but the one without a liner was really sticking. I had to raise the bed all the way just to get the load out. A van pulled in next to us, and next thing I knew, BOOM! The trailer was on its side. It crushed the van, did \$8,500 in damages to the trailer, and now I'm down to just one trailer. I wish I'd ordered my DiamondSlide liner sooner."*

- Buddy Shavender, Guy Shavender Trucking, Pantego, NC.



Bedlining  
Systems

# **SUPERFINE** Bedliner UHMW BEDLINERS

*A SuperFine™ liner is the single best investment you can make for your dump truck or trailer*

## What is SuperFine™?

**SuperFine™** reprocessed liners are made from clean UHMW, ground and pulverized into tiny particles that are pressed into sheet material. This process of high temperature and pressure forms an economical material with wear characteristics comparable to virgin UHMW material.

## SuperFine is Low Cost

A **SuperFine™** liner has similar characteristics of a virgin liner and **costs far less!**

**4X tougher**  
than aluminum

**2X tougher**  
than steel

**10 FT. and 12 FT. wide** covers more than just the floor



# **SUPERFINE** UHMW BEDLINERS

*A custom liner for your hauling needs*

- Reprocessed UHMW (Ultra High Molecular Weight) material.
- Used for the most abrasive, high impact application.
- 4 x tougher than aluminum at half the weight.
- 2 x tougher than steel.
- Not suitable for asphalt hauling!



12', 10' or 8' wide kits are custom cut and scored precisely to your trailer dimensions and include all mounting hardware.

# WASTE COVERING SYSTEMS



Waste  
Covering  
Systems

# HY-TOWER SL

## Armless Covering System

Covers the full range of roll-off containers

Introducing the all new HY-TOWER SL™ armless tarping system from Donovan Enterprises.

HY-TOWER SL™ raises 15 feet above the truck frame, allowing easy coverage of 15 to 40 cubic yard containers. The HY-TOWER SL™ tucks compactly behind the cab during transportation.

Easily covers heaping container loads

Raising 15 feet above your truck frame, HY-TOWER SL™ allows you to cover peaked loads easily from the safety of the ground. Light, easy to handle, extra-wide (100") tarp allows quick and effective covering of your containers.

Extremely low maintenance

The HY-TOWER SL™ was designed to minimize regular maintenance and accidental damage. With no pivot arms to bend or break, the chief cause of tarper maintenance is eliminated. The HY-TOWER SL™ helps you keep your truck on the road.



HY-TOWER SL™ Patent Numbers  
US Patent No. 6,109,680  
US Patent No. 6,347,826B1

Waste  
Covering  
Systems

### *Keep It Simple!*

*"We have three HY-TOWER SL's. I am very impressed with their performance and the fact that there is virtually no maintenance. I highly recommend the HY-TOWER SL™."*

Kevin Clowater  
President  
Royal Disposal

# HY-TOWER SL



STEP 1

Raise the tower.



STEP 2

Deploy tarp and secure.



STEP 3

Lower the tower.



STEP 4

Hit the road!



Waste  
Covering  
Systems

## System Highlights

- Weight:** 420 lbs. Installed, 450 lbs. Shipped
- Power:** 12 or 24 volt Self-Contained Hydro-Electric Pump (connects to truck's battery)
- Installation:** 3 hours (shipped pre-assembled)
- Warranty:** Roller Bar Spring (lifetime), Hydraulic Cylinder & Pump (1 year).

Donovan Enterprises • 3353 SE Gran Park Way • Stuart, FL 34997  
 email: info@donovan-ent.com • 800-327-8287 • www.donovan-ent.com • 772-286-3350

# QUICK FLIP



The Donovan Quick Flip is the answer for haulers that want an affordable automatic tarper that can easily cover 15, 20, 30 and 40 cubic yard containers.

## Automatic!

Covers with the flip of a switch!

## Simple!

Installs quickly and easily.

Easily adjust arm length at install for your largest containers.

## Reliable!

Heavy duty arm and spring construction ensures durability.

Solid Donovan Warranty! (details on reverse side)

## Affordable!

Contact your local Donovan dealer.

# QUICK FLIP



Designed for Simplicity, Ease and Durability



Telescopic gantry bolts easily to truck frame.



Heavy duty spring assembly simply bolts to fender.



90-tooth heavy duty direct drive motor winds up tarp with a flip of a switch.



12 or 24 volt self-contained electric / hydraulic power unit raises gantry for varying container heights.



## Warranty

DD Motor: 3 year replacement  
 Power unit: 1 year replacement  
 Cylinder: 1 year replacement  
 Components: 90 day warranty against defects in material and workmanship.

# QUICK FLIP Conversion Kit

Quickly and Easily...

Convert your double leg HY-TOWER or other gantry system to an automatic system!

Convert this



Into this!

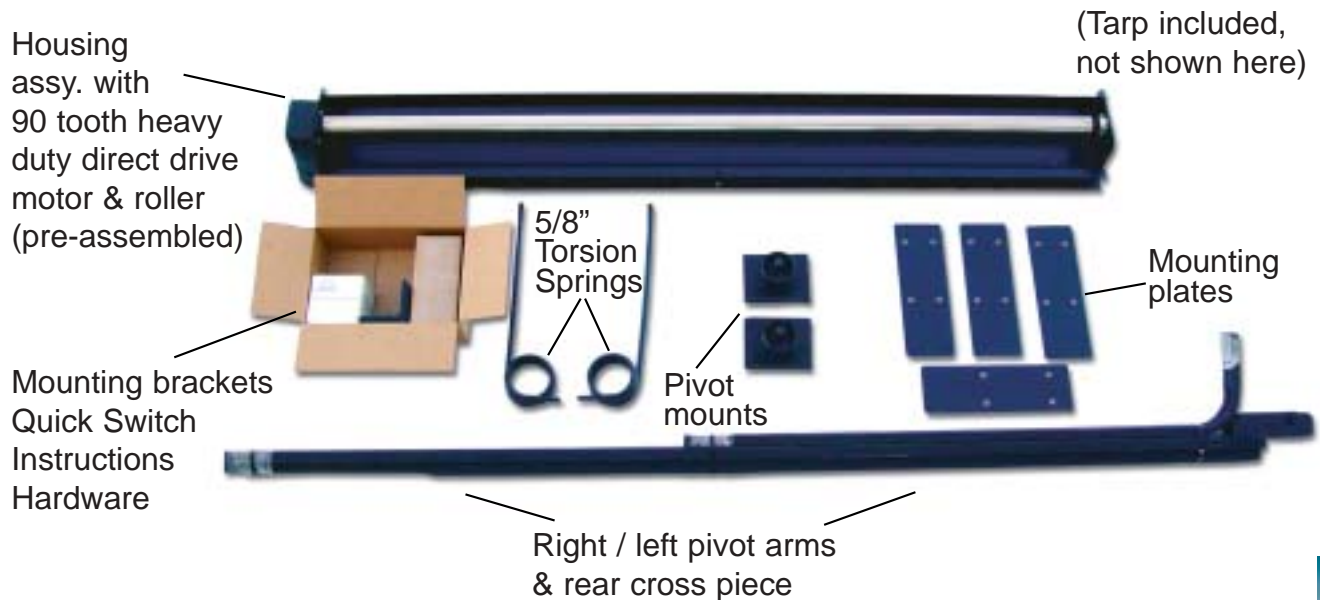


Waste  
Covering  
Systems

# QUICK FLIP Conversion Kit

## Components

When you order a Quick Flip Conversion Kit, you will receive the following components:



## Easy Installation:

- Step 1: Remove housing from existing Hy-Tower and replace with Quick Flip housing.
- Step 2: Install spring mounts and Quick Flip arms per instruction.
- Step 3: Connect electrical cables and Quick Switch.
- Step 4: Attach tarp to roller and rear cross piece.

That's it! You'll love the ease of installation!

## System Highlights:

- Weight: 250 lbs.  
Warranty: Direct Drive Motor - 3-year replacement.  
Mechanism and Tarp - 90 days against defects in materials and workmanship.

# MANTIS

Best Automatic Rolloff Tarpaper Available!



We listened to haulers and turned their ideas into the best rolloff tarpaper available. Try a Mantis today. You'll love it!

Donovan Enterprises • 3353 SE Gran Park Way • Stuart, FL 34997  
email: [info@donovan-ent.com](mailto:info@donovan-ent.com) • 800-327-8287 • [www.donovan-ent.com](http://www.donovan-ent.com) • 772-286-3350

Waste  
Covering  
Systems

# MANTIS

## Design Eliminates Risk of Operator Error Like No Tarpaper Has Before!



### Clear Visibility for Driver

Mantis design eliminates the need for a gantry. This allows drivers clear, unobstructed visibility through the cab rear window and side mirrors. Have new and inexperienced drivers? The last thing you need to do is block their vision out of cab mirrors and windows. You won't have to worry about that with the low profile Mantis design!



### Automatic Vertical Rise

The Mantis design allows vertical rise of the roller with one valve control operation. This eliminates the need for a gantry. What's more, the Mantis design will not allow the operator to move arms forward into the cab.



### Low Profile Prevents Damage

The majority of tarpaper damage occurs when tarpaper arms come in contact with containers or compactors while they are being on-loaded or off-loaded. Mantis' low profile design positions the arms below container trouble areas, thus reducing the potential for damage.



### No More Container Overhang

Arm overhang you'll see in other brands causes severe wear and tear to tarps and pivot arms. The Mantis design allows the operator to place the roller at the back of 15, 20, 30, 40 or 50 cubic yard containers...every time!



# MANTIS

## Better Load Seal Keeps Trash Inside Your Container

20 cu. yd.



30 cu. yd.



40 cu. yd.



### Place Roller in Back of Container Every Time!

The unmatched adjustability of the Mantis allows you to place the tarp roller at the back end of your 15, 20, 30, 40 or 50 cubic yard containers every time. This ensures a proper seal on your container from front to back!

### Lower Tarp Attachment in Front

A lower tarp attachment point behind the cab prevents air flow under your tarp, thus ensuring a better seal at the front of your containers. Even 10 yard containers!

### *Raised Rear Wall Containers (Western U.S.)*



Raised rear wall containers have proven difficult to cover properly...until now! Other tarpers fail to consistently place the tarp roller against the rear wall to obtain a proper seal of the load. They just don't have the range of adjustability for 15 - 50 cu. yard containers. They come up short on some containers and hang over the back on others. Either way, trash blowout is a major problem. Not with Mantis! 15, 20, 30, 40 or 50 cu. yd. containers, it makes no difference. Mantis allows you to place the tarp roller against the rear wall for a proper load seal...every time!

# MANTIS

Quick, Easy and Inexpensive to Maintain!



Repair/Replace Arms in Minutes!

- Just unbolt and slide out to replace!
- Replacement arms are UPS shippable for quick service.

No Cylinders in Arms!

- If you need to repair or replace Mantis' pivot arms you won't need to perform major disassembly like you'll find with other brands. Other brands require unwanted disassembly of arms to repair or replace hydraulic cylinders or hoses located inside the arms. Not Mantis!



## Key Benefits:

- Better load seal: Tarp tight on front edge and roller on back edge of container...every time!
- Increased safety: No gantry behind cab gives driver unobstructed cab visibility.
- Lowest maintenance tarper available: Low profile design avoids damage.
- No telescoping arms to jam up with road spray and debris.
- Longer tarp life: Eliminating arm overhang of containers makes tarps last longer than ever! Mighty Mesh reinforcement makes rough container top rails a non-issue!
- Easy to use: Even new and substitute drivers will find Mantis simple and easy to understand and use...properly!

## System Highlights:

- Hydraulic operation: Mantis runs off truck's hydraulics with simple 2-control operation.
- No cylinders or hydraulic lines in arms.
- Replacement arms shipped UPS.
- Installation time: 1/2 the time required by competitor systems.
- System weight: 875 lbs. (shipped weight 1000 lbs.)
- Warranty: Cylinders - 2 year replacement warranty against defects in material or workmanship.  
Mechanism - 1 year against defects in material or workmanship.  
Tarp - 90 days against defects in material or workmanship.

Donovan Enterprises • 3353 SE Gran Park Way • Stuart, FL 34997  
email: info@donovan-ent.com • 800-327-8287 • www.donovan-ent.com • 772-286-3350

# *SIDEWINDER*

Automatic Transfer Trailer Covering System



Waste  
Covering  
Systems

*Keep It Simple!*



Donovan Enterprises • 3353 SE Gran Park Way • Stuart, FL 34997  
email: [info@donovan-ent.com](mailto:info@donovan-ent.com) • 800-327-8287 • [www.donovan-ent.com](http://www.donovan-ent.com) • 772-286-3350

# SIDEWINDER

Automatic Transfer Trailer Covering System



## Safety

The Sidewinder operates from the ground, with the push of a button, keeping everything within view of the driver.

- **No more** climbing!
- **No more** pulling heavy tarps over peaked loads...RISKING A COSTLY FALL!



## Time Saver

Self-contained hydraulics, hinges on only one side and a tarp that can be repaired with simple plastic zip ties make the Sidewinder the lowest maintenance automatic covering system on the market. Wet kit hook-up optional.



## Low Maintenance

Only 20 seconds to cover or uncover your load. Use the saved time to haul extra loads each day and have the Sidewinder pay for itself.

Waste Covering Systems

### System Highlights

- Weight:** 675 pounds  
**Fit:** Adjusts to Transfer Trailers up to 53 ft. in length and 102 inches in width. Accommodates trailers with 90°, radius or mitered front corners  
**Installation:** Approximately 16 man hours. (2 men x 8 hours)  
**Variations:** Driver Side Mount or Curb Side Mount  
**Warranty:** 1 Year - Pump, Cylinder, Actuator



# Stock Waste Hauling Tarps

## Hand Tarps

12' x 24'

#80 Gator-Mesh  
 #2892 Knitted Black Mesh  
 #4170 Multi-Color PVC Mesh  
 #4172 Leno-Weave Multi-Mesh

12' x 26'

#81 Gator-Mesh  
 #2893 Knitted Black Mesh  
 #4171 Multi-Color PVC Mesh  
 #4173 Leno-Weave Multi-Mesh



12' x 53'

#4078 Gator-Mesh, Transfer Trailer

## Replacement Tarps for Automatic Roll-off Tarping Systems

#4396	116" x 28'	Pioneer HR4500RG - Mighty Mesh material
#4397	108" x 28'	Pioneer 2063 White Poly - Knitted White Poly Mesh material
#4470	108" x 28'	Pioneer 2063 Mighty Mesh
#4398	109" x 28'	K-Pac Replacement Tarp - Knitted White Poly Mesh
#4463	109" x 28'	K-Pac Replacement Tarp - Mighty Mesh
#4399	114" x 28'	O'Brian Auto Tarp II - Mighty Mesh
#2989	93" x 28'	Multi-Color PVC Mesh with vinyl reinforcement
#2989G	100" x 28'	Gator-Mesh Automatic Replacement Tarp - fits any system
#2989M	100" x 28'	Mighty-Mesh Automatic Replacement Tarp - fits any system
#4601	100" x 35'	Mantis Tarp - PVC Mesh with Mighty Mesh reinforcements
#4465	96" x 28'	Quick Flip - Mighty Mesh
#4466	96" x 28'	Quick Flip - Black Knit Mesh

## Hy-Tower Replacement Tarps made out of Knitted Black Mesh

#2497	96" x 28'	Hy-Tower (Double Leg) Replacement Tarp
#2978	100" x 28'	Hy-Tower (Single Leg) Replacement Tarp
#2963	96" x 28'	Hy-Tower (Both) Replacement Tarp with 18" Flaps
#2964	94" x 28'	Diagram A with 18" Flaps, Shock Cord and D Ring Straps

## Sidewinder Replacement Tarps

#2857 9' x 53' Orange Knitted Polypropylene

## Compactor Diapers

5' x 7'  
 #82 Multimesh

6' x 8'  
 #83 Multimesh

## Bungee Straps

15", 21", 31", 41"



# Waste Material Specifications

Specifications	Knitted Black Mesh	Gator-Mesh	Orange Knitted	Mighty Mesh	Leno-Weave Multi-Mesh	Multi-Color PVC Mesh	18 oz. Vinyl
<b>Fiber Content</b>	Polypropylene	Polypropylene	Polypropylene	PVC Coated Polyester	50% Polypropylene, 50% PVC Coated Polyester	PVC Coated Polyester	Polyester
<b>Color</b>	Black	Black	Orange	Varies	Length Black Polypropylene Width Multi-Color PVC	Varies	7 Solid Colors
<b>Construction</b>	70% Knit	50 x 60	Knit	20 x 20 or greater	15 x 10	14 x 10	20 x 20
<b>Denier</b>	600 (mono-filament)	800 (mono-filament)	N/A	1000	1000 (PVC)	1000	1000
<b>Weight (per sq. yard)</b>	6.4 oz.	7.6 oz.	N/A	21.3 oz.	7.7 oz.	11 oz.	18 oz.
<b>Grab Tensile Strength (lbs/sq in)</b>	120 x 210	375 x 445	N/A	550 x 550	250 x 205	247 x 180	375 x 375
<b>Tear Strength (lbs)</b>	60 x 80	165 x 185	N/A	150 x 150	110 x 90	90 x 80	100 x 100
<b>Burst Strength (per sq in)</b>	340 lbs	720 lbs	225	N/A	400 lbs	250 lbs	500 - 550
<b>Puncture Resistance</b>	95 lbs	165 lbs	N/A	N/A	85 lbs	N/A	270
<b>Temperature Resistance</b>	-40 to 325° F	-40 to 325° F	-30 to 400° F	-40 to 172° F	-40 to 172° F	-40 to 172° F	-30 to 176° F
<b>Recommended uses</b>	Hand tarps, Trash Tarps	Hand Tarps, Trash Tarps	Sidewinder Tarps	Automatic roll-off tarps	Dump truck and Hand tarps	Dump Truck and Hand Stronger than most PVC Mesh	Asphalt tarps
<b>Comments</b>	Conforms to loads	Light but strong, low air flow		Our strongest material	Improved air flow		99% waterproof

## Waste Tarp Material Descriptions



**Knitted Black Mesh**

- Knitted Black Mesh - Part #2390
- Good airflow conforms better to loads.
  - Will resist ripping and tearing.
  - Strongly recommended for Hy-Tower tarps. Any other material or spec not approved by Donovan will void the warranty on the Hy-Tower.
  - A 12' x 24' tarp only weighs 15.5 lbs.



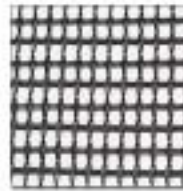
**Mighty-Mesh**

- Mighty-Mesh - Part #4083
- Stop replacing your tarps.
  - The strongest mesh you'll find anywhere.
  - Minimum of 20, 1000 denier threads per inch.
  - Style and color of material will vary.



**Gator Mesh**

- Gator-Mesh - Part #4050
- We recommend all our roll-off customers switch to this material.
  - The lightest and strongest material on the market.
  - As close to rip proof as you can get.
  - Weighs 30% less than standard PVC Mesh and is 2 1/2 times stronger. A 12' x 24' tarp weighs 17.5 lbs.



**Leno-Weave Multi-Mesh**

- Leno-Weave Multi-Mesh - Part #3516
- Made with multi-color PVC threads in the fill direction and black Polypropylene with a Leno-Weave in the warp direction.
  - Larger holes than Multi-Color PVC-Mesh and weighs about 20% less.
  - Will reduce wind whip and increase tarp life.



**Orange Knitted Polypropylene**

- Orange Knitted Polypropylene - Part #2857
- Lightweight but strong.
  - It's flexibility to conform to your loads.
  - Repair in minutes with plastic zip ties!
  - Recommended by Donovan for Sidewinder tarping system. Any other material used on the Sidewinder will cause problems and will void the warranty.



**Multi-Color PVC Mesh**

- Multi-Color PVC Mesh - Part #746
- Color will vary.
  - 10 x 14, (1000) denier threads per inch.
  - A 12' x 24' weighs 25 to 33 lbs.



**18.5 oz Vinyl**

- 18.5 oz Vinyl - Part # varies by color
- 100% waterproof material, which we recommend for use with asphalt.
  - This material weighs 18.5 oz./sq. yard or .126 lbs./sq. foot.
  - Our Vinyl is available in 7 colors (Black #215, Blue #216, Red #214, Yellow #217, Green #218, Orange #219, and White #1575).



# Stock Dump Truck and Dump Trailer Tarps

## Heavy Duty Black Mesh

Part #	Finished Size
3598	7' x 12'
3599	7' x 14'
3600	7' x 16'
3601	7' x 18'
3602	7' x 20'
4015	7' x 22'
3968	7' x 24'
4016	7' x 26'
5	7'6" x 10'
6	7'6" x 12'
7	7'6" x 14'
8	7'6" x 16'
8	7'6" x 18'
10	7'6" x 20'
11	7'6" x 22'
12	7'6" x 24'
13	7'6" x 26'
2152	7'6" x 28'
15	7'6" x 30'
16	7'6" x 32'

## Custom Tarps

Lumber, Steel, Cable, Side to Side, and Smoke tarps are available.  
Call for information.

## Multi Mesh

Part #	Finished Size
26	7' x 12'
27	7' x 14'
28	7' x 16'
29	7' x 18'
30	7' x 20'
2327	7' x 22'
2328	7' x 24'
2329	7' x 26'
2330	7' x 28'
2331	7' x 30'
2297	7'6" x 10'
2298	7'6" x 12'
2299	7'6" x 14'
2300	7'6" x 16'
2301	7'6" x 18'
2302	7'6" x 20'
2303	7'6" x 22'
2304	7'6" x 24'
2305	7'6" x 26'
2306	7'6" x 28'
2307	7'6" x 30'
2308	7'6" x 32'
2309	7'6" x 34'
2310	7'6" x 36'
2311	7'6" x 38'
2312	7'6" x 40'

## Asphalt Lumite

Part #	Finished Size
395	7'6" x 12'
396	7'6" x 14'
397	7'6" x 16'
398	7'6" x 18'
399	7'6" x 20'
400	7'6" x 22'

## Vinyl Tarps w/Flaps & Shock Cords

Part #	Size
4322	9' 6" x 16'
2971	9'6" x 18' with flaps
2972	9'6" x 20' with flaps
4327	9'6" x 22' with flaps
4323	9' x 16' with flaps
4324	9' x 18' with flaps
4325	9' x 20' with flaps
4326	9' x 22' with flaps

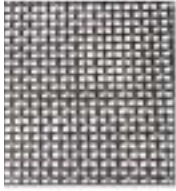
## Dump Truck and Trailer Specifications Chart

Specifications	Heavy Duty Black PVC Mesh	Asphalt Lumite	18 oz. Vinyl	Donoprene	White Polyester
Fiber Content	PVC Coated Polyester	Polypropylene	Polyester	Polyester	Polyester
Color	Black	Black	7 Solid Colors	Black/Gray	White
Construction	11 x 11	30 x 20	20 x 20	19 x 19	Rachel Knit
Denier	1000	600 (mono-filament)	1000	1000	1000
Weight (per sq. yard)	11 oz.	5.9 oz.	18 oz.	9 oz.	8.5 oz.
Grab Tensile Strength (lbs/sq in)	236 x 243	420 x 270	375 x 375	450 x 340	230 x 390
Tear Strength (lbs)	87 x 87	130 x 80	100 x 100	100 x 100	N/A
Burst Strength (per sq in)	324 lbs	535 lbs	500 - 550	600	400
Puncture Resistance	N/A	160 lbs	270	200 lbs	76
Temperature Resistance	-40 to 172° F	-40 to 325° F	-30 to 176° F	-40 to 176° F	-40 to 472° F
Recommended uses	Dump Truck Tarps	Asphalt Tarps	Asphalt Tarps	Asphalt Tarps	Dump Truck Tarps
Comments	Solid Black in color	95% waterproof	95% waterproof	99% waterproof	Higher priced and worth it

Donovan Enterprises • 3353 SE Gran Park Way • Stuart, FL 34997  
email: info@donovan-ent.com • 800-327-8287 • www.donovan-ent.com • 772-286-3350

Heavy Duty Truck Tarps Industry

# Dump Truck & Trailer Material Descriptions



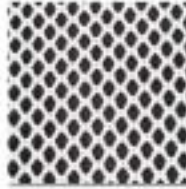
- Heavy Duty Black PVC Mesh - Part #166**
- Similar to Multi-Color PVC Mesh but black.
  - 11x 11, (1000 denier) threads per inch.
  - A 12' x 24' weighs 25 to 33 lbs.



- Donoprene - Part #1272**
- Made specially for Donovan Enterprises.
  - One side is coated with specially treated black vinyl so it can work with asphalt.
  - Waterproof and half the weight of our standard vinyl.



- Asphalt Lumite - Part #222**
- This is a polypropylene material which is water resistant.
  - Mostly used with asphalt because it can handle temperatures up to 350 degrees.
  - Recommended for asphalt haulers who do not require loads to be waterproof.



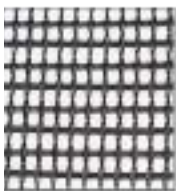
- White Polyester Mesh - Part #690**
- Lightweight and strong
  - This material will allow air to flow through it easily.
  - This tarp is rather costly, but you get what you pay for.
  - It is a favorite of our most demanding customers.



- 18.5 oz Vinyl - Part # varies by color**
- 100% waterproof material, which we recommend for use with asphalt.
  - This material weighs 18.5 oz./sq. yard or .126 lbs./sq. foot.
  - Our Vinyl is available in 7 colors  
(Black #215, Blue #216, Red #214, Yellow #217, Green #218, Orange #219, and White #1575).



- 14 oz. Urethane - Part #4017**
- Black in color and 100% waterproof.
  - Weighs 14 oz./sq. yard or .1 lbs./sq. foot
  - Can handle heat up to 400 degrees.



- Leno-Weave Multi-Mesh - Part #3516**
- Made with multi-color PVC threads in the fill direction and black Polypropylene with a Leno-Weave in the warp direction.
  - Larger holes than Multi-Color PVC-Mesh and weighs about 20% less.
  - Will reduce wind whip and increase tarp life.



- Multi-Color PVC Mesh - Part #746**
- Color will vary.
  - 10 x 14, (1000) denier threads per inch.
  - A 12' x 24' weighs 25 to 33 lbs.



- Mighty-Mesh - Part #4083**
- Stop replacing your tarps.
  - The strongest mesh you'll find anywhere.
  - Minimum of 20, 1000 denier threads per inch.
  - Style and color of material will vary.

## Dump Truck and Trailer Specifications Chart

Specifications	14 oz. Urethane	Mighty Mesh	Leno-Weave Multi-Mesh	Multi-Color PVC Mesh
<b>Fiber Content</b>	Polyester	PVC Coated Polyester	50% Polypropylene, 50% PVC Coated Polyester	PVC Coated Polyester
<b>Color</b>	Black	Varies	Length Black Polypropylene, Width Multi-Color PVC	Varies
<b>Construction</b>	18 x 18	20 x 20 or greater	15 x 10	14 x 10
<b>Denier</b>	1000	1000	1000 (PVC)	1000
<b>Weight (per sq. yard)</b>	14 oz.	21.3 oz.	7.7 oz.	11 oz.
<b>Grab Tensile Strength (lbs/sq in)</b>	450 x 400	550 x 550	250 x 205	247 x 180
<b>Tear Strength (lbs)</b>	80 x 68	150 x 150	110 x 90	90 x 80
<b>Burst Strength (per sq in)</b>	N/A	N/A	400 lbs	250 lbs
<b>Puncture Resistance</b>	N/A	N/A	85 lbs	N/A
<b>Temperature Resistance</b>	-30 to 400° F	-40 to 172° F	-40 to 172° F	-40 to 172° F
<b>Recommended uses</b>	Asphalt Tarps	Automatic roll-off tarps	Dump truck and Hand tarps	Dump Truck/Hand
<b>Comments</b>	100% waterproof	Our strongest material	Improved air flow	Stronger than most PVC Mesh

Donovan Enterprises • 3353 SE Gran Park Way • Stuart, FL 34997  
email: info@donovan-ent.com • 800-327-8287 • www.donovan-ent.com • 772-286-3350

# Tarping Accessories



## Bungee Straps

In Stock!  
American made and  
import available  
15"  
21"  
31"  
41"



## Compactor Diapers

5' x 7'  
6' x 8'  
\* Custom sizes available



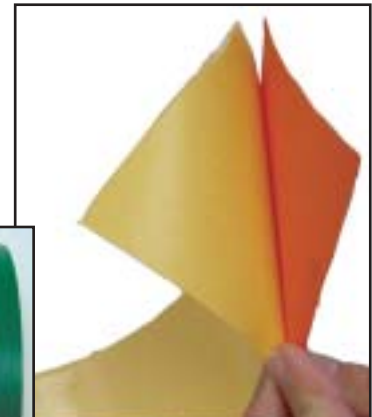
## Liners

HH-66



## Patch Kits

Peel & Stick



Most ship UPS ground

Sold by the foot

Donovan Enterprises • 3353 SE Gran Park Way • Stuart, FL 34997  
email: info@donovan-ent.com • 800-327-8287 • www.donovan-ent.com • 772-286-3350

# Shade Panels



# Got Shade?

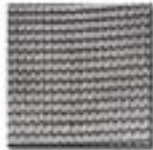


## 73% Woven



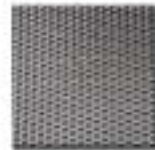
Allows 27% of the sunlight to pass through the material.  
Weighs approximately .035 lbs./sq.ft.  
Life expectancy is 10 years.

## 70% Knit



70% knitted mesh material.  
Allows 30% of sunlight to pass through.  
Rip-stop construction.  
Weighs approximately .055 lbs./sq.ft.

## Super Sun Blocker



95% woven shade material.  
Allows 5% of the sunlight to pass through the material.  
Highest tensile and tear strength,  
weighs approximately .062 lbs./sq.ft.

Part #	Size
705	6' x 8'
293	6 x 10'
346	6 x 12'
103	10' x 10'
496	10' x 12'
63	10' x 20'
64	10' x 24'
65	10' x 40'
66	10' x 50'
277	12' x 12'
67	12' x 20'
68	12' x 24'
69	12' x 40'
70	12' x 50'
71	18' x 24'
72	20' x 20'
73	20' x 30'
74	20' x 40'
75	20' x 50'

Part#	Size
839	6' x 8'
840	6' x 10'
841	6' x 12'
842	10' x 10'
843	10' x 12'
844	10' x 20'
845	10' x 24'
846	10' x 40'
847	10' x 50'
848	12' x 12'
849	12' x 20'
850	12' x 24'
851	12' x 40'
852	12' x 50'
853	18' x 24'
854	20' x 20'
855	20' x 30'
856	20' x 40'
857	20' x 50'

Part#	Size
858	6' x 8'
859	6' x 10'
860	6' x 12'
861	10' x 10'
862	10' x 12'
863	10' x 20'
864	10' x 24'
865	10' x 40'
866	10' x 50'
867	12' x 12'
868	12' x 20'
869	12' x 24'
870	12' x 40'
871	12' x 50'
872	18' x 24'
873	20' x 20'
874	20' x 30'
875	20' x 40'
876	20' x 50'

The life expectancy of a shade panel that is hung and maintained properly is 10 years!

"We cover everything." Need a custom cover? Call us!

- Equipment
- Zoos
- Ground cover
- Birds
- Fish ponds
- Wind guards
- Fences
- Gardens
- Animals

Donovan Enterprises • 3353 SE Gran Park Way • Stuart, FL 34997  
email: info@donovan-ent.com • 800-327-8287 • www.donovan-ent.com • 772-286-3350



# New Breakthrough Technology!

**DURABUILT**  
TARP MOTOR

Industry's Best  
Motor...  
hands down!

- 3-year full replacement warranty!
- Retrofittable to all competitor tarpers!
- 90-tooth drive gear delivers more torque than other motors!
- Machined 1-piece worm gear means no pins to shear!
- Drive shaft and gear box epoxy sealed and pressure tested for maximum quality!
- Forged drive gear for tight quality control and high strength!
- 1 motor for all length front to rear tarpers!



Industry's Best  
Switch...  
hands down!

- Solenoid Switch...Not Relay!
- Handles up to 300 continuous amps!  
(That's 10x more than a typical relay switch.)
- Ships pre-assembled!
- Includes inline 50 amp auto reset breaker.
- Installs in minutes! It's so easy, you'll never buy another brand...ever!
- Switch and breaker pre-wired and neatly packaged in weather-sealed protective box.



*Try One Solenoid Quick Switch...And You'll Never Buy Another Brand...EVER!*

# Covering the Heavy Duty Truck and Waste Industries since 1977

**DiamondSlide** and  
**SuperFine** Bedliner  
Products



**2000 Series** Pull-Style  
Dump Body Tarping System



*Call for a dealer near you.*

**5000 Series** Dump  
Body Tarping System



**Hy-Tower SL**  
Semi-Automatic Rolloff  
Tarping System



**Ask about our new products coming soon!**

**3353 SE Gran Park Way Stuart, FL 34997**

**800.327.8287**

**www.donovan-ent.com**

**fax 772.287.0431**