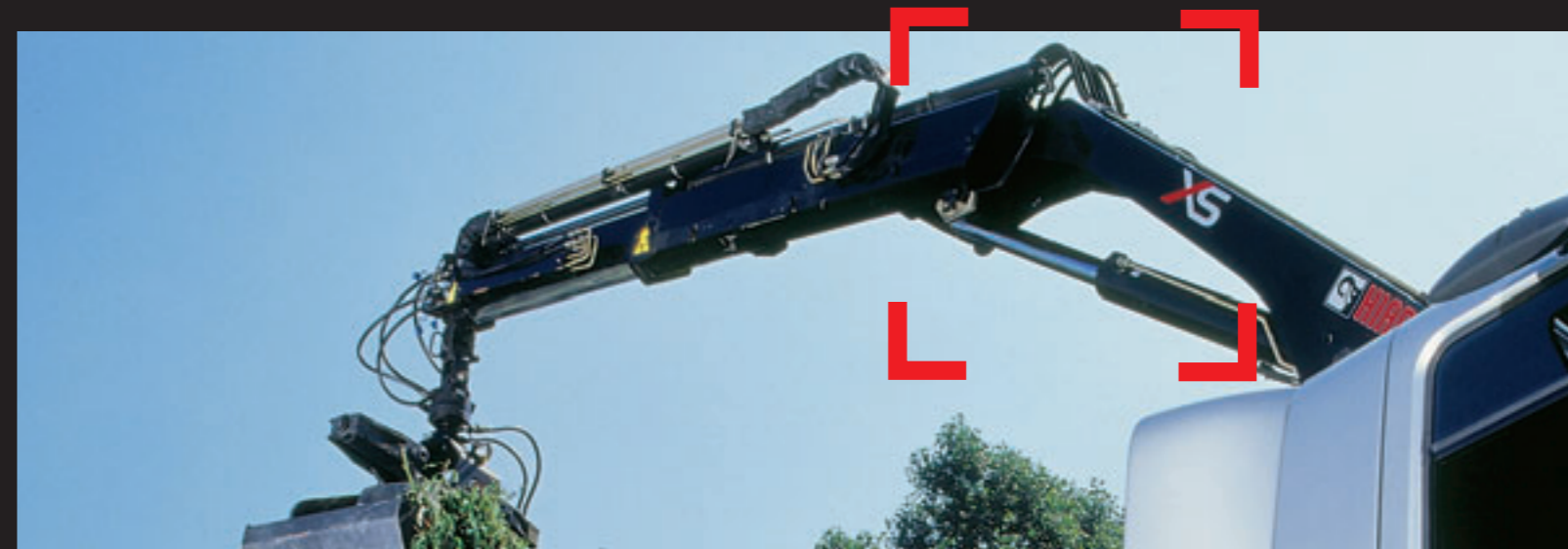
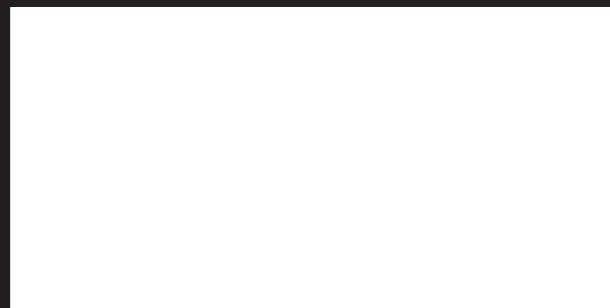


# HIAB XS 111 Range 8-11 tm



Product brochure



Hiab is part of Cargotec Corporation

PB-111-EN-EU\_061006

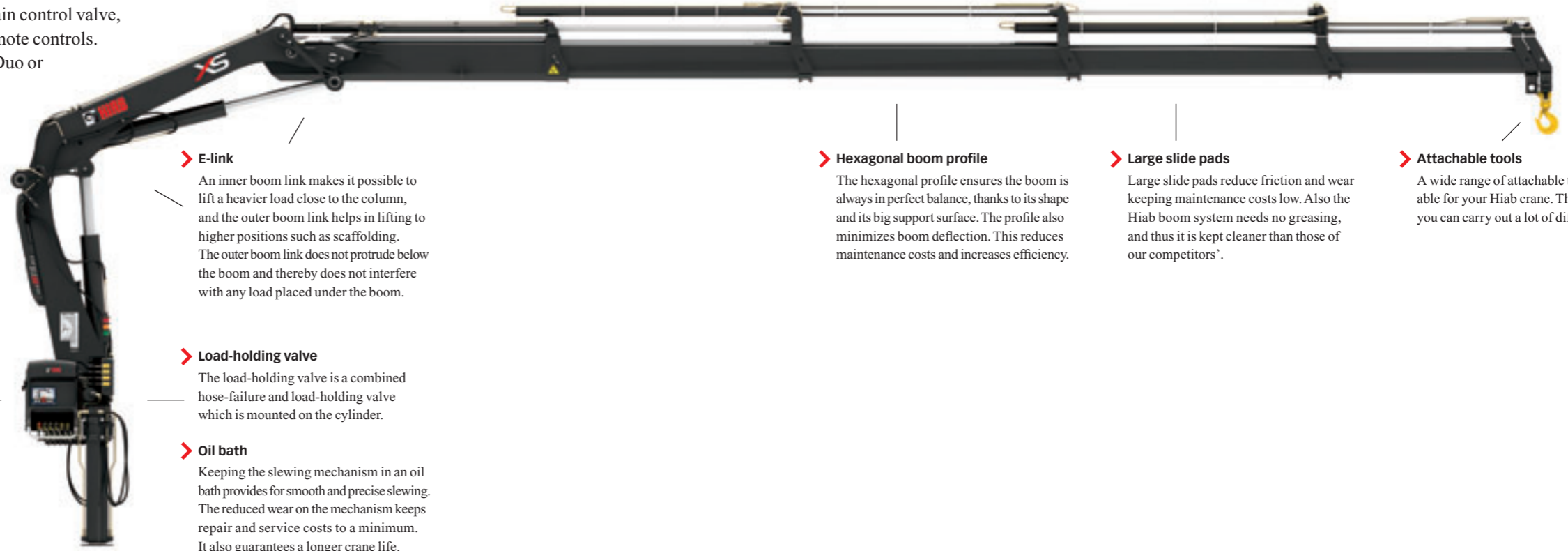
[www.hiab.com](http://www.hiab.com)



**The HIAB XS 111 – a toolbox with reach**

The HIAB XS 111 is a very versatile tool in the mid capacity range. This 8-11 tonne-metre workhorse is built to withstand rough tasks such as digging and grapple work, yet it has the feel and control for delivering loads with very high precision. The well proven hexagonal boom profile, high torque slewing system and our intelligent electronics systems will provide you with a crane that always performs its best. The HIAB Valve 80 is the main control valve, and there is a choice of manual or remote controls. The crane can be delivered with the Duo or HiDuo control system.

Providing **solutions** for your **business**



> **Column close to centreline**

On Hiab cranes with a rack-and-pinion slewing housing the centre of gravity is as close to the centreline as possible. This means that the same outreach is offered on both sides of the truck.

> **E-link**

An inner boom link makes it possible to lift a heavier load close to the column, and the outer boom link helps in lifting to higher positions such as scaffolding. The outer boom link does not protrude below the boom and thereby does not interfere with any load placed under the boom.

> **Load-holding valve**

The load-holding valve is a combined hose-failure and load-holding valve which is mounted on the cylinder.

> **Oil bath**

Keeping the slewing mechanism in an oil bath provides for smooth and precise slewing. The reduced wear on the mechanism keeps repair and service costs to a minimum. It also guarantees a longer crane life.

> **Hexagonal boom profile**

The hexagonal profile ensures the boom is always in perfect balance, thanks to its shape and its big support surface. The profile also minimizes boom deflection. This reduces maintenance costs and increases efficiency.

> **Large slide pads**

Large slide pads reduce friction and wear keeping maintenance costs low. Also the Hiab boom system needs no greasing, and thus it is kept cleaner than those of our competitors'.

> **Attachable tools**

A wide range of attachable tools are available for your Hiab crane. These make sure you can carry out a lot of different tasks.

> **HiDuo control system**

The HiDuo control system is based upon the Valve 80. HiDuo comes with the XSdrive remote control and the SPACE 4000 intelligence system. Apart from the benefits of remote crane operation, SPACE 4000 also provides Automatic Duty Control (ADC), and the Hiab unique Automatic Speed Control (ASC). The ASC function provides a continuous, ultra-smooth increase of capacity.

> **SPACE 4000 intelligence system**

The SPACE 4000 system intelligently monitors and controls the electronic functions of your crane. These functions are focused on assisting the operator in two aspects, safety and productivity.

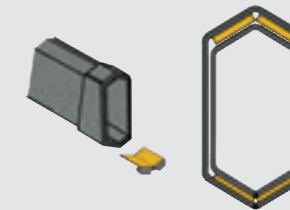
Safety is managed by an Over Load Protection (OLP) function and productivity is increased by the Automatic Duty Control (ADC) and the Hiab unique Automatic Speed Control (ASC) functions.

Further more, the system handles functions primarily used by service personnel such as fault code indication and load cycle data. The SPACE 4000 is a part of the HiDuo control system.



< **Valve 80**

The HIAB Valve 80 is a top-of-the-line open-centre valve based on well-proven technique which gives superb reliability. The valve handles large oil flows and provides great precision and ease of operation.



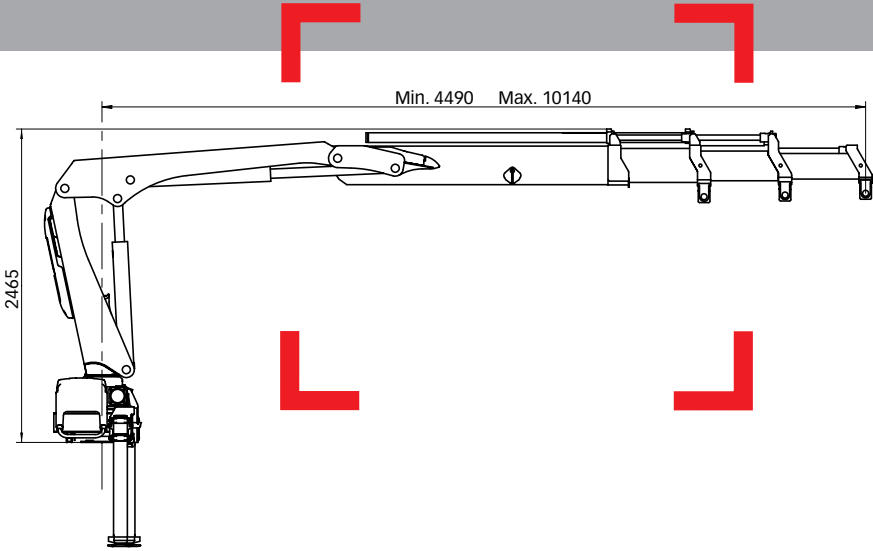
< **Large slide pads**

The hexagonal profile enables the use of larger slide pads. This makes the extensions move more smoothly and reduces mechanical wear on the boom.

< **XSdrive**

The XSdrive has been ergonomically developed to relieve you of stress and strain in the hands, arms and back. The load indicators provide information for quick and correct actions when work is going on. There are also a lot of accessories that can be added in order to find the perfect controlling solution just for you.

# HIAB XS 111 Range 8-11 tm



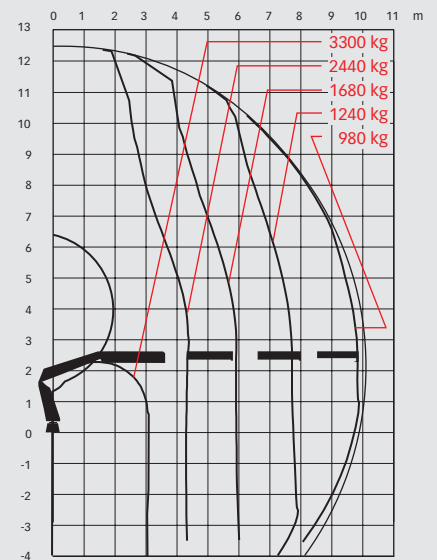
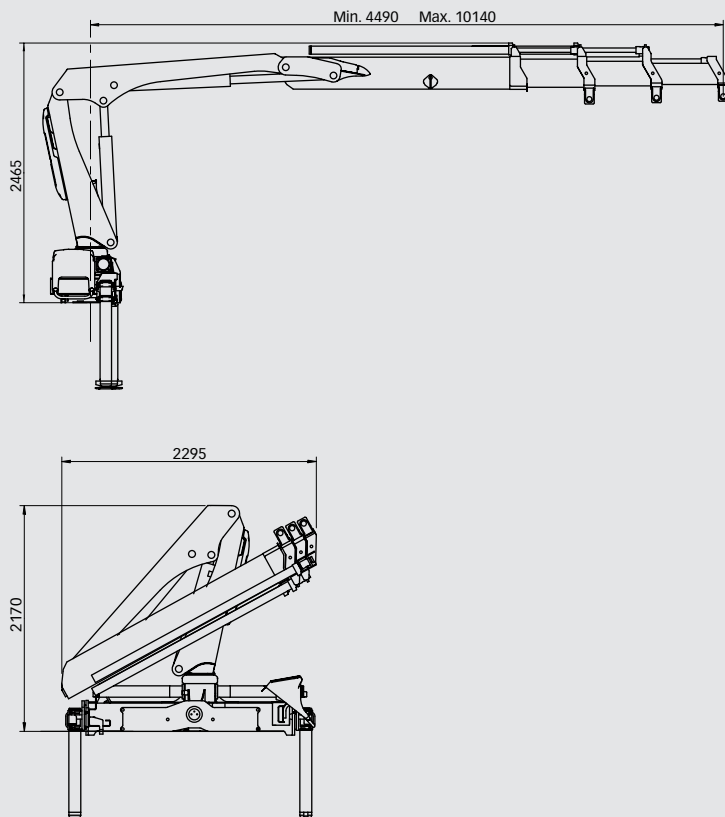
Basic data

# HIAB XS 111 Basic data

## Technical data

	B-2 Duo	BS-2 HiDuo	B-3 Duo	▣ B-3 HiDuo ▣	E-3 HiDuo	E-5 HiDuo
Max. lifting capacity (kNm)	97	106	93	101	103	97
Outreach - hydraulic extensions (m)	8.0	7.7	10.1	10.1	10.2	14.6
Outreach - manual extensions (m)	12.1	11.8	12.1	12.1	14.3	16.7
Outreach / Lifting capacity, standard (m / kg)	2.8 / 3550	2.3 / 4650	3.1 / 3150	3.1 / 3300	2.4 / 4350	2.6 / 3800
	4.2 / 2360	3.9 / 2780	4.3 / 2200	4.3 / 2440	4.3 / 2440	4.5 / 2180
	5.9 / 1680	5.5 / 1940	5.9 / 1560	5.9 / 1680	6.1 / 1660	6.3 / 1420
	7.7 / 1260	7.4 / 1440	7.8 / 1140	7.8 / 1240	8.1 / 1200	6.3 / 1420
	-	-	9.8 / 900	9.8 / 980	10.2 / 940	10.4 / 720
	-	-	-	-	-	12.5 / 580
	-	-	-	-	-	14.6 / 480
Slewing angle	406°	406°	406°	406°	406°	406°
Height in folded position (mm)	2170	2170	2170	2170	2170	2170
Width in folded position (mm)	2250	2250	2295	2295	2390	2486
Installation space needed (mm)	695	695	785	785	792	808
Weight - "standard" crane without stabilizers (kg)	1200	1180	1300	1300	1620	1770
Weight - stabilizer equipment (kg)	140 - 285	140 - 285	140 - 285	140 - 285	140 - 285	140 - 285

## HIAB XS 111 B-3 HiDuo



### Disclaimer

Hiab cranes have been built to meet the highest standards of safety and service life and have been thoroughly tested. Strength calculations for this model have been carried out in accordance with EN13001. Hiab's certified Quality Assurance System complies with the ISO 9001. Some of the items in our literature may be extra equipment. Certain applications may require an official permit. We reserve the right to change technical specifications without prior notice. Hiab cranes produced for EU-countries are CE-marked and comply with the European Standard EN 12999.